

DETAILS

Product Number	CA12056_TINA2-W
Family	Tina
Type	Assembly
Color	black
Diameter	16,1 mm
Height	9,7 mm
Style	round
Optic Material	PMMA
Holder Material	
Fastening	tape
Status	production ready
ROHS Compliant	Yes
Date Updated	11/11/2016



OPTICAL PROPERTIES

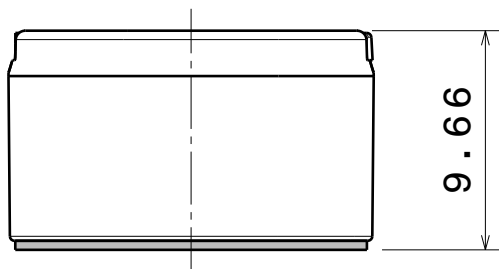
LED	Viewing	Light	Efficiency	cd/lm	Connector
	Angle	Beam			
XP-E	50 deg	Wide	88 %	1.500	-
XP-G	57 deg	Wide	88 %	1.000	-
XT-E	46 deg	Wide	87 %	1.400	-
XP-G2	54 deg	Wide	88 %	1.000	-
XP-E2	52 deg	Wide	89 %	1.200	-
H35B0 (LEMWA32)	52 deg	Wide	89 %	1.300	-
Z5	40 deg	Wide	89 %	1.500	-

D

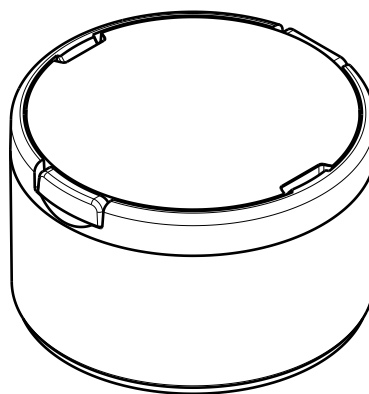
C

B

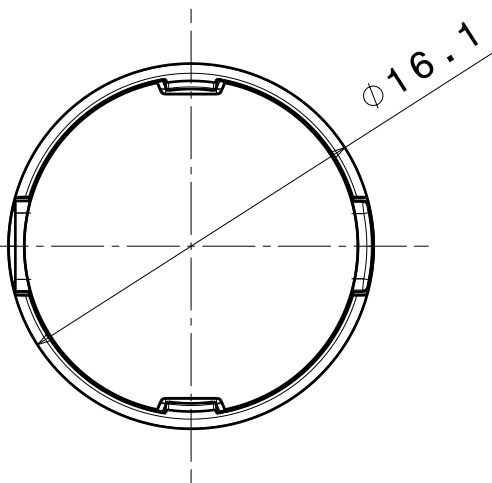
A



Bottom view
Scale: 3:1

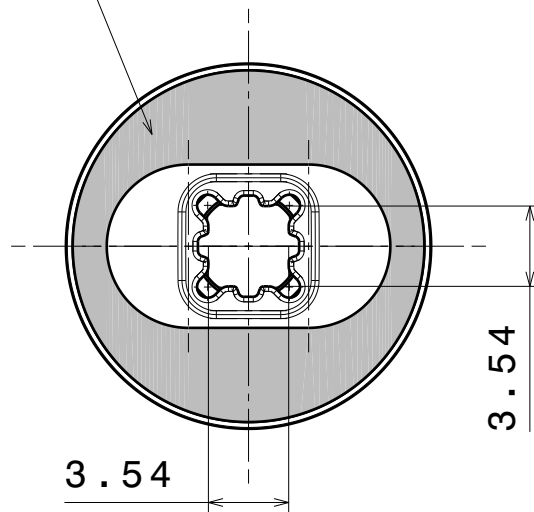


Isometric view
Scale: 3:1



Front view
Scale: 3:1

PU foam tape 0.4mm



Rear view
Scale: 3:1

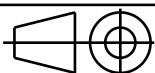
INDEX	PART NO	DESCRIPTION	MATERIAL	COLOUR
1	-	TINA2-lens	PMMA	
2	C11418	TINA2-XP-HLD-TAPE-BLK	PC	black

Tolerances if not otherwise shown
According to DIN ISO 2768-1
Linear measures:
Up to 30mm class M, otherwise class C.
According to DIN ISO 2768-2
Form and position: class L

LEDiL

Ledil Oy
Salorankatu 10
FIN 24240 SALO
Finland

THIRD ANGLE PROJECTION:



DRAWING TITLE

TINA2-XP-series assembly

This drawing is the property
of LEDiL Oy. It may not be
reproduced, copied or
communicated without a written
agreement with LEDiL Oy.

SIZE PART NUMBER

A4

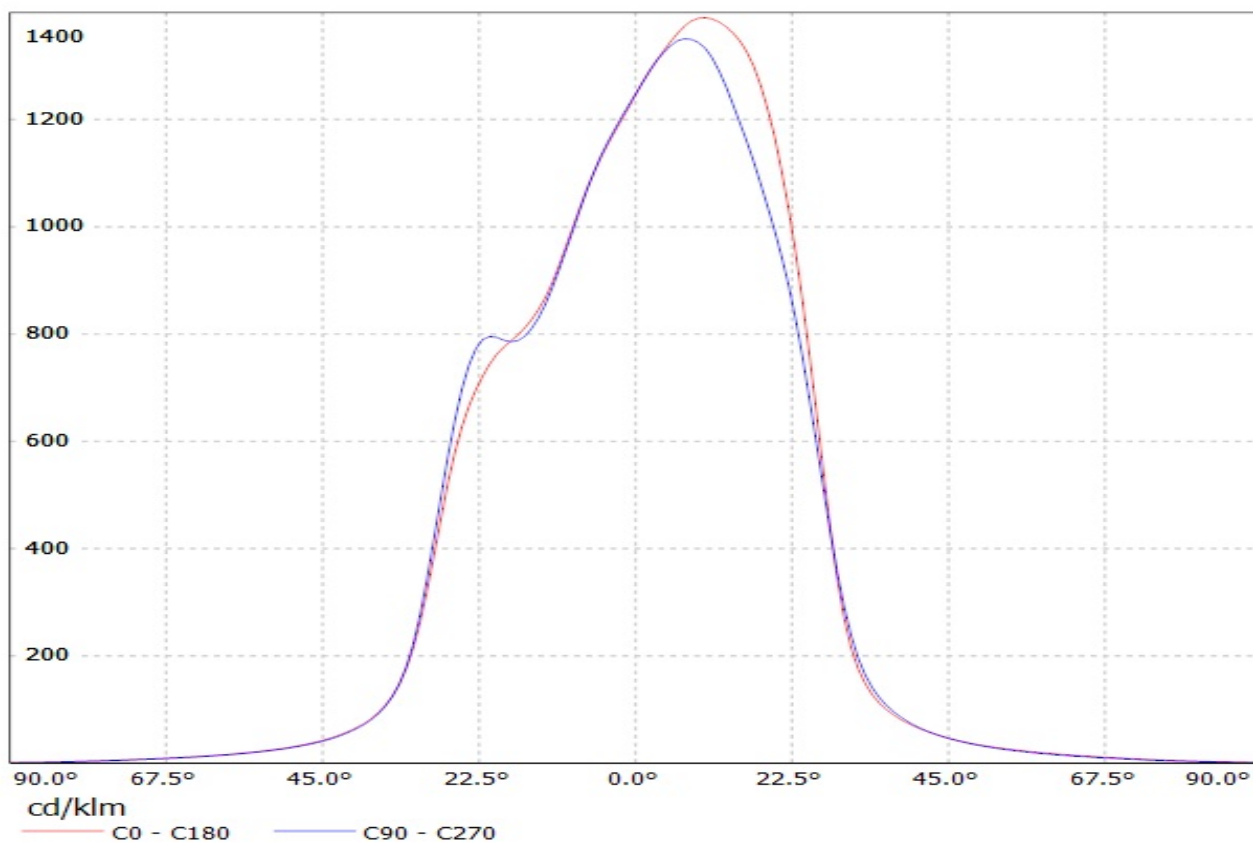
-

SCALE 3:1 WEIGHT 1,3 g SHEET 1/1

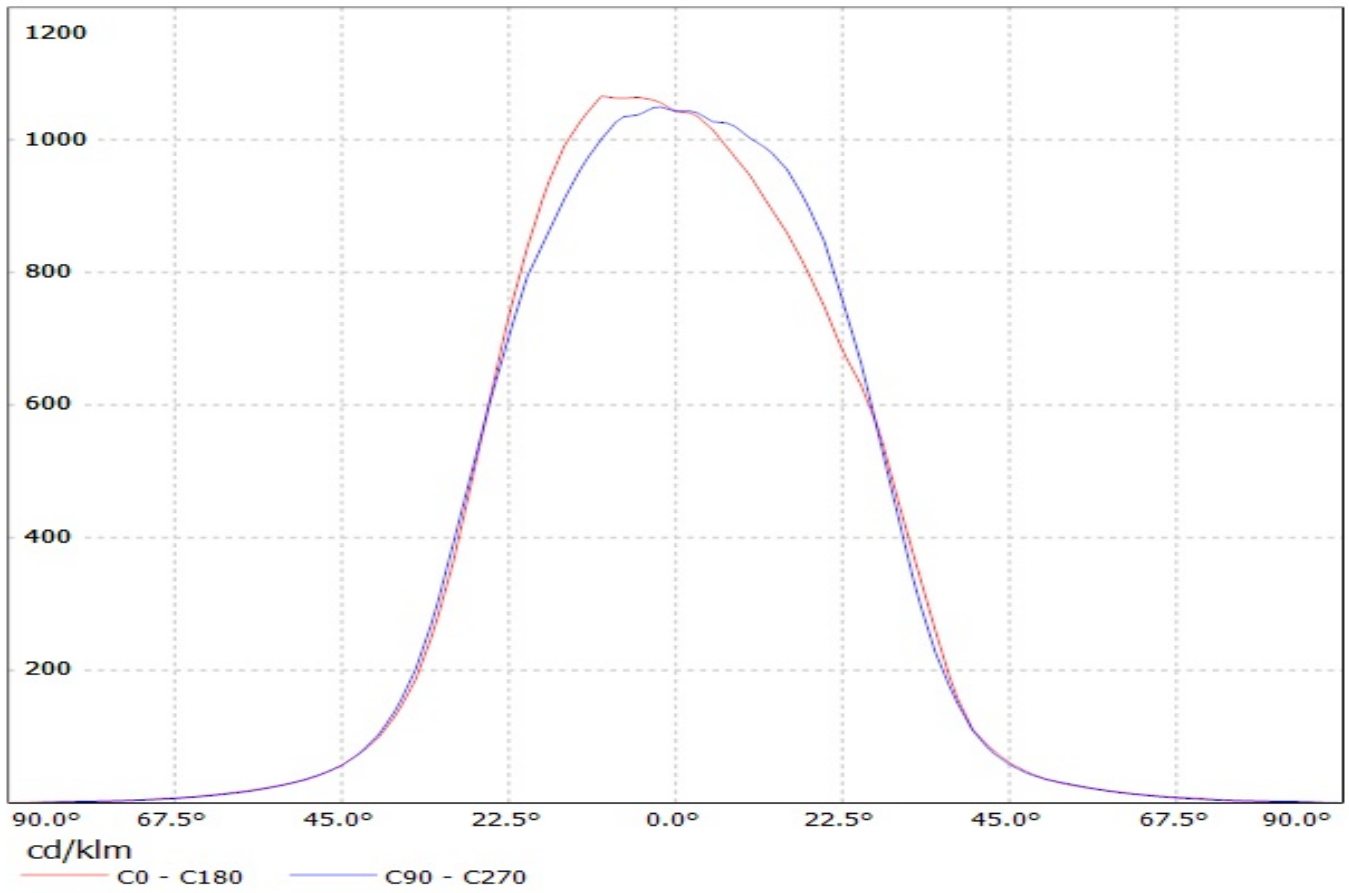
D

A

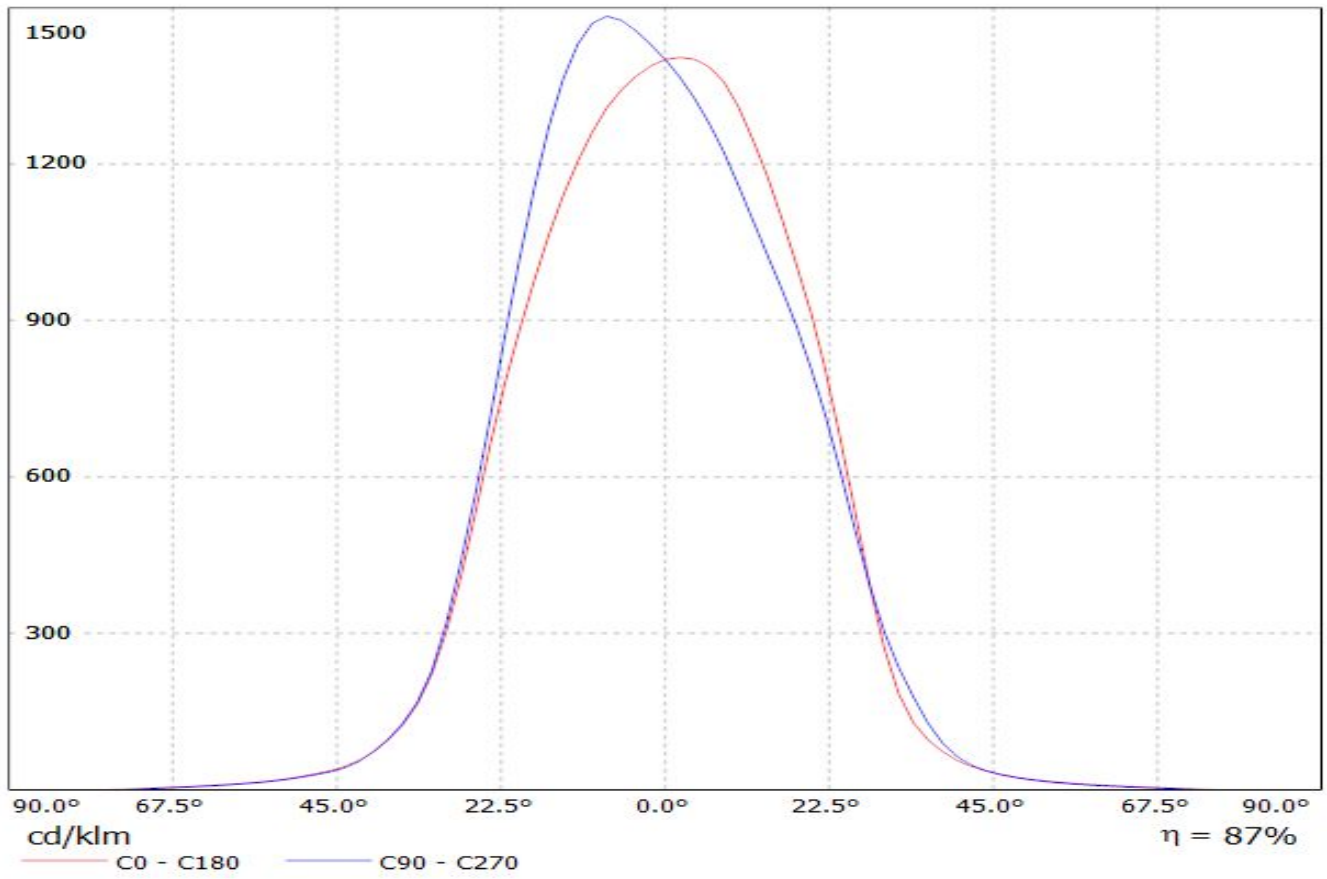
Luminaire: LEDIL OY CA12056_TINA2-W (XP-E) Efficiency=88%
Lamps: 1 x Cree XP-E (78lm @ 250mA)



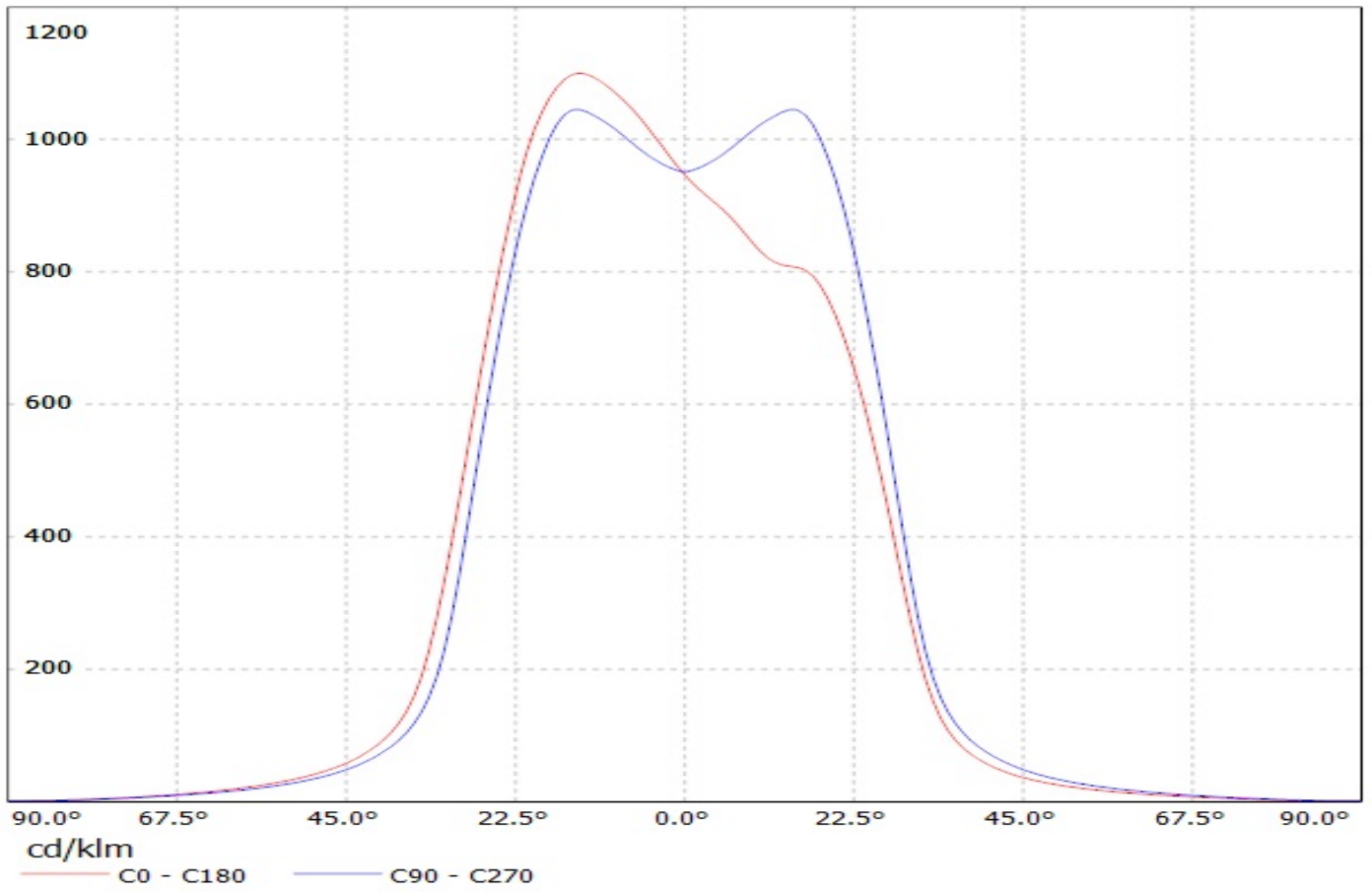
Luminaire: Ledil Oy CA12056_TINA2-W (Cree XP-G 92lm @ 250mA) Efficiency=88%
Lamps: 1 x Cree XP-G 92lm @ 250mA



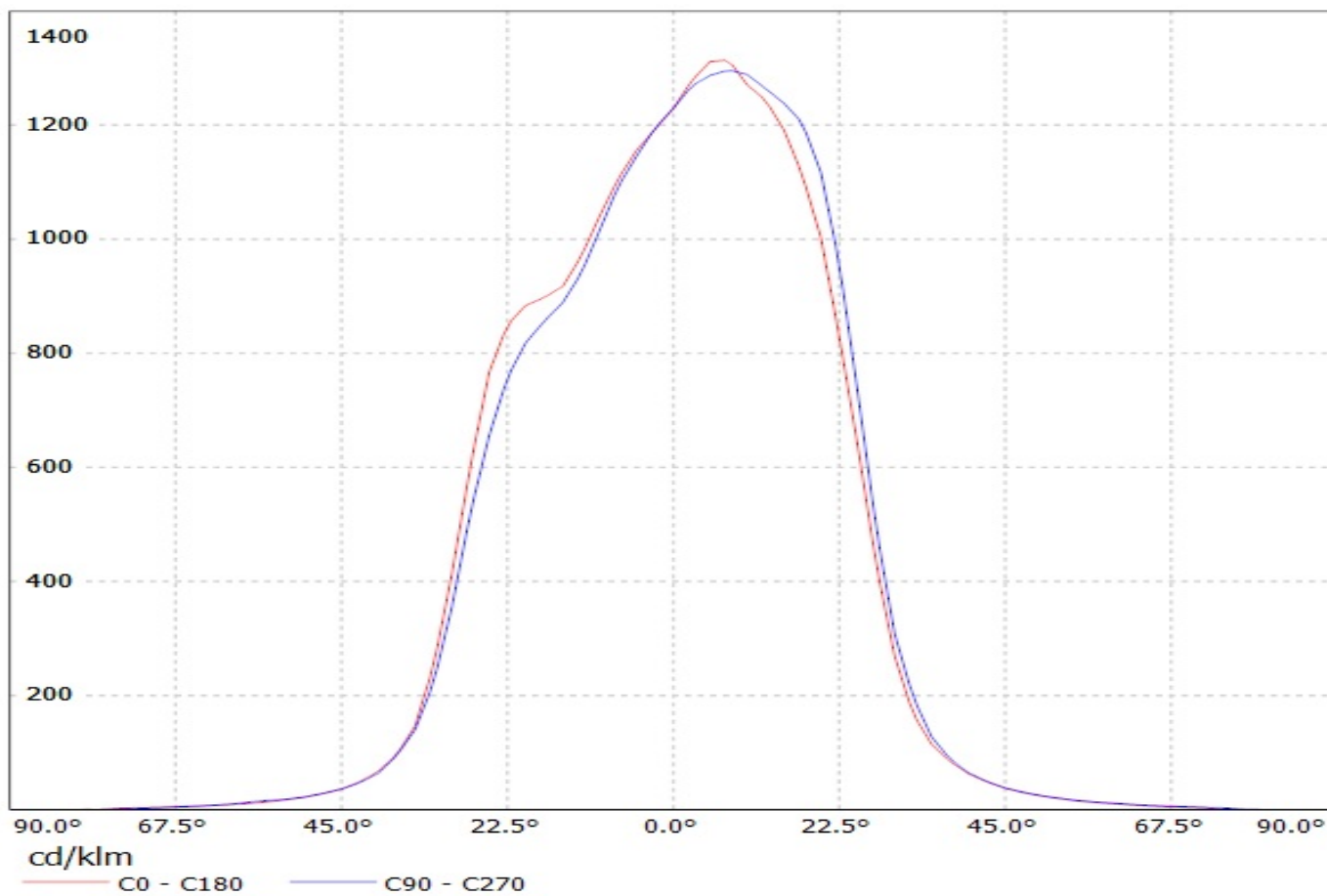
Luminaire: LEDiL CA12056_TINA2-W_(XT-E) Eff. 87%
Lamps: 1 x Cree XT-E (102lm@250mA)



Valaisin: LEDIL OY CA12056_TINA2-W_(XP-G2) Eff.88.2%
Lamput: 1 x XP-G2 (113lm@250mA)

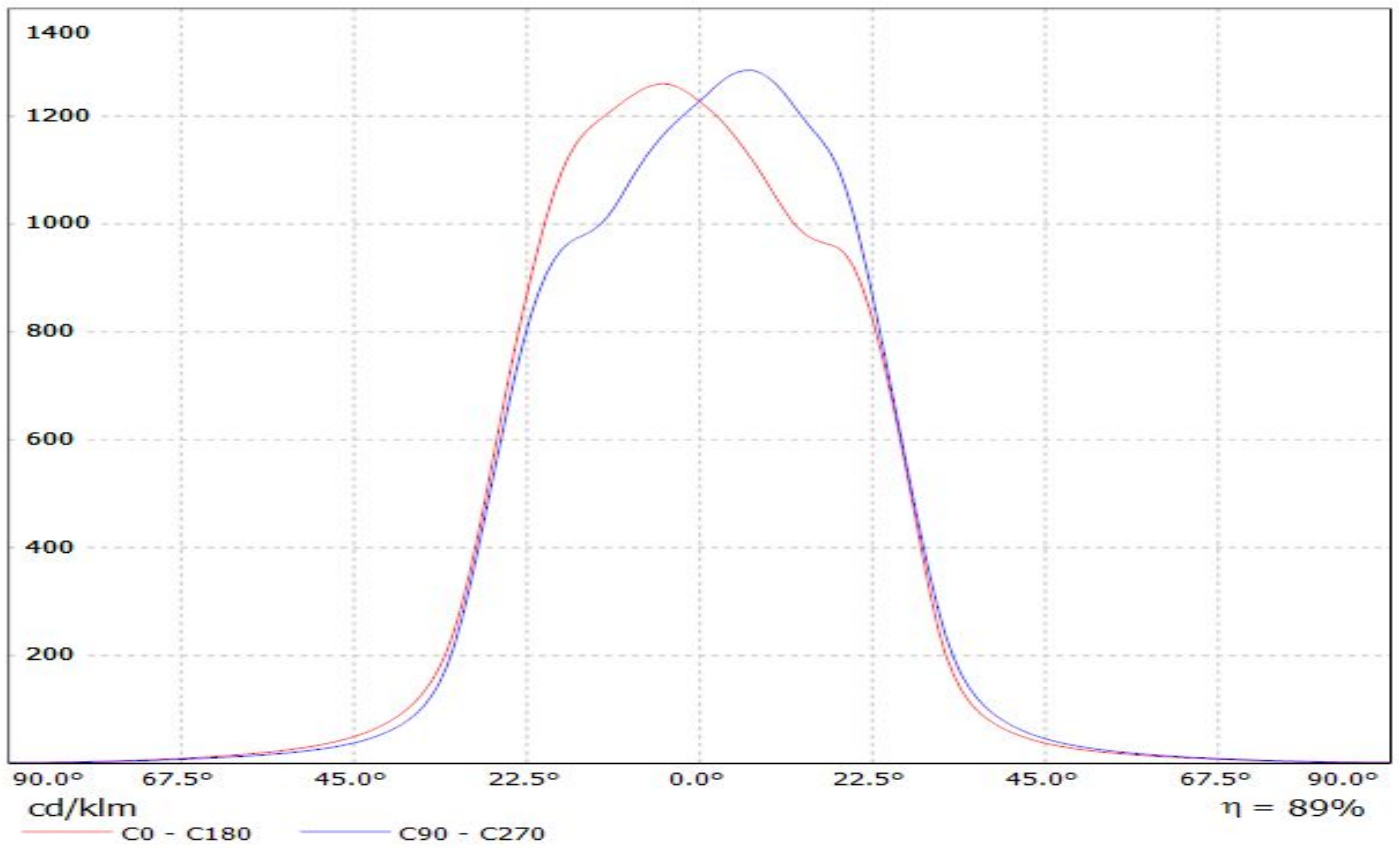


Luminaire: Ledil Oy CA12056_TINA2-W (CREE XP-E2 92 lm @ 250 mA) Efficiency=89%
Lamps: 1 x CREE XP-E2 92 lm @ 250 mA

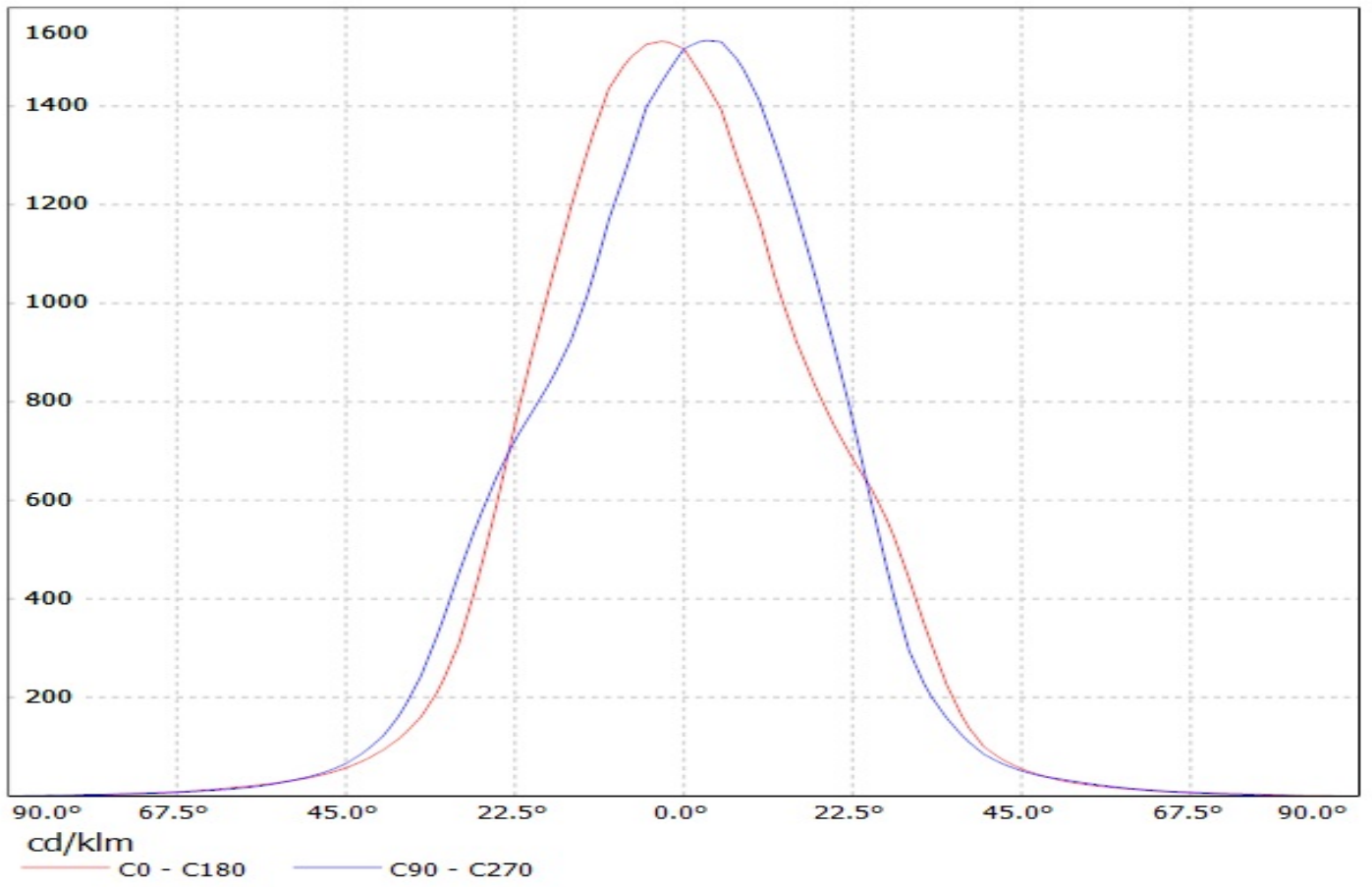


LEDiL Oy CA12056_TINA2_W_(LG3535_2W) Eff.88.8% / LDC (Linear)

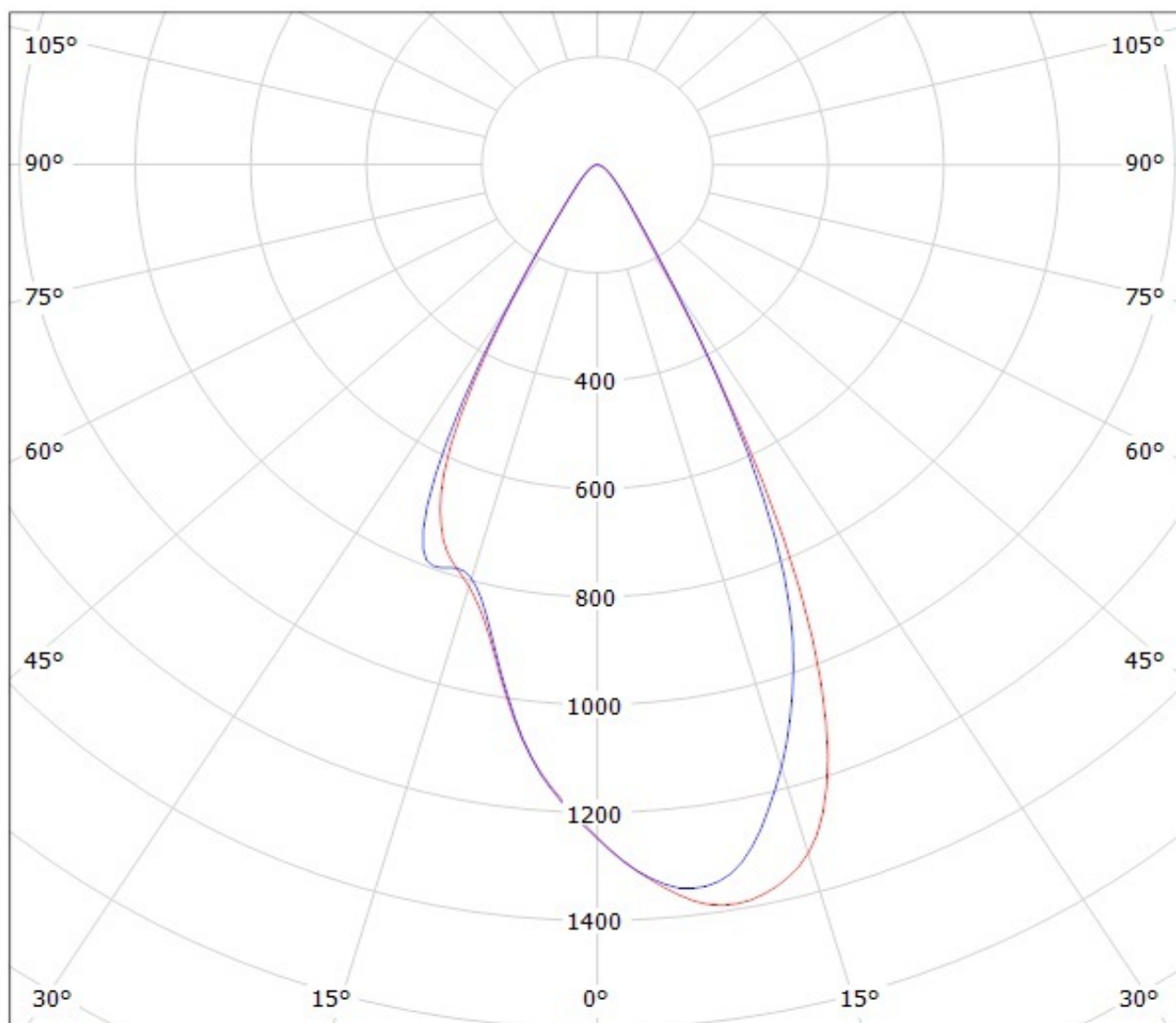
Luminaire: LEDiL Oy CA12056_TINA2_W_(LG3535_2W) Eff.88.8%
Lamps: 1 x LG3535_2W (97.2479lm@250mA)



Luminaire: Ledil Oy CA12056_TINA2-W (Seoul Z5 78lm @ 250mA) Efficiency=89%
Lamps: 1 x Seoul Z5 78lm @ 250mA



Luminaire: LEDIL OY CA12056_TINA2-W (XP-E) Efficiency=88%
Lamps: 1 x Cree XP-E (78lm @ 250mA)

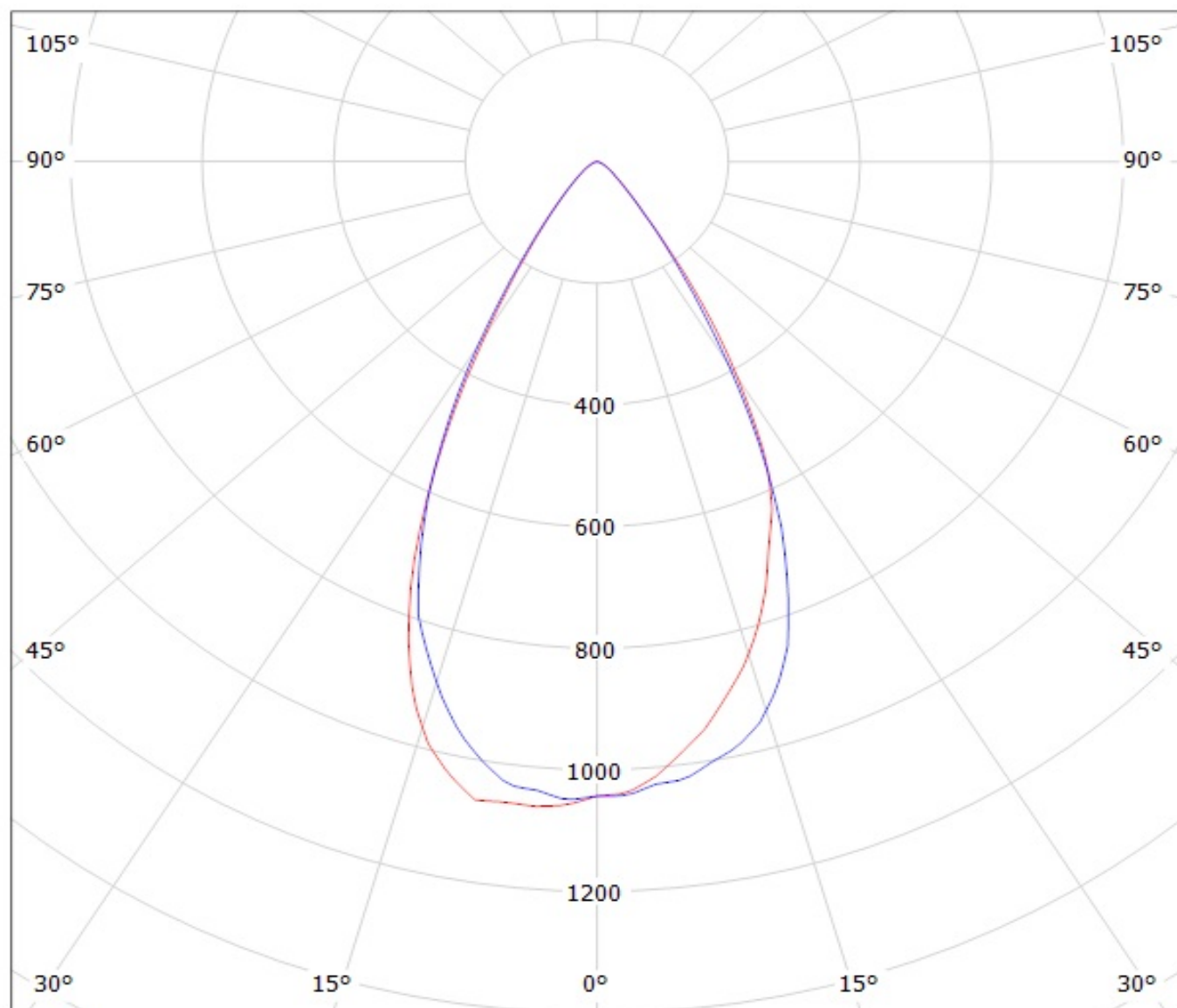


cd/klm

— C0 - C180

— C90 - C270

Luminaire: Ledil Oy CA12056_TINA2-W (Cree XP-G 92lm @ 250mA) Efficiency=88%
Lamps: 1 x Cree XP-G 92lm @ 250mA

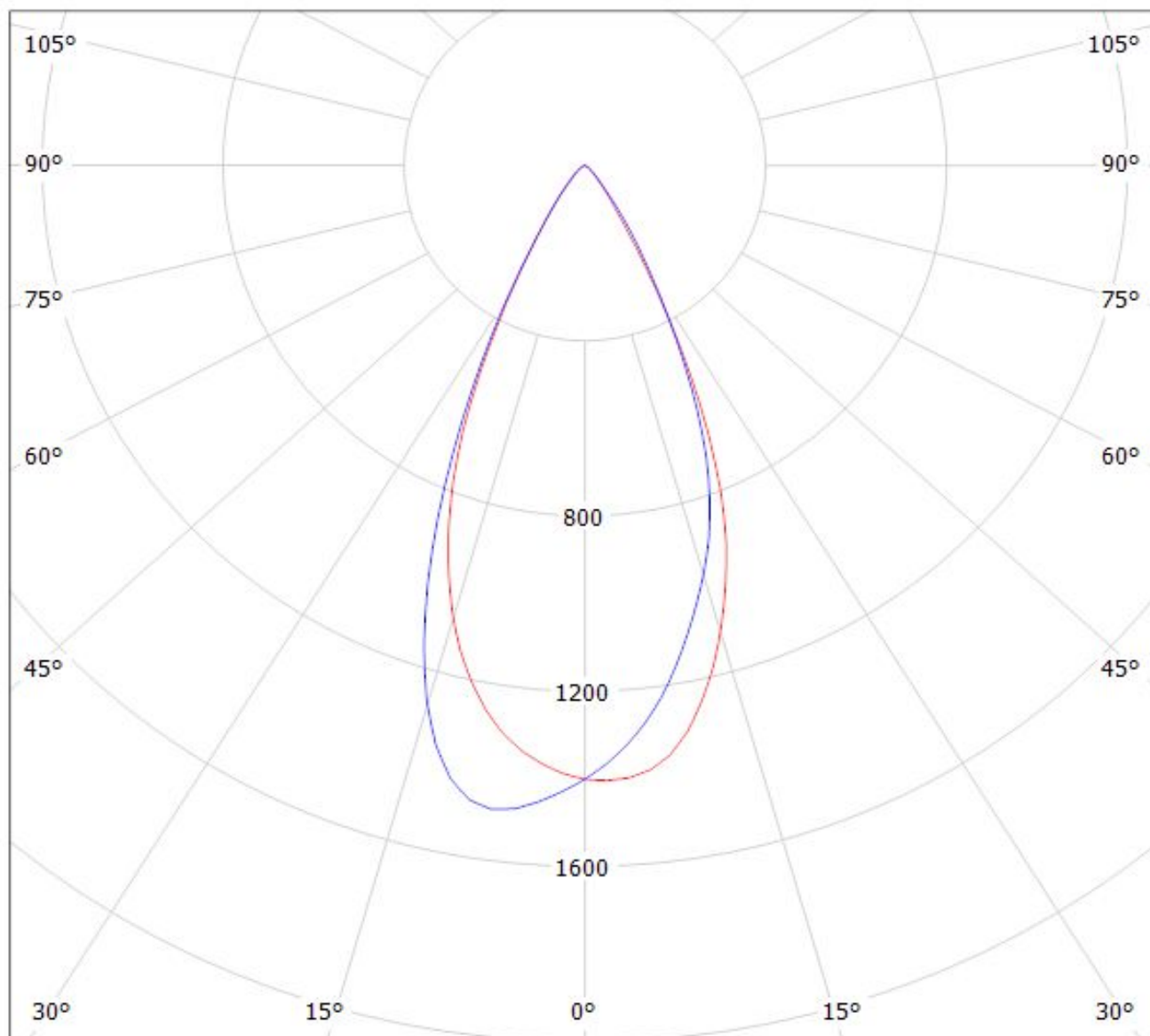


cd/klm

— C0 - C180

— C90 - C270

Luminaire: LEDiL CA12056_TINA2-W_(XT-E) Eff. 87%
Lamps: 1 x Cree XT-E (102lm@250mA)

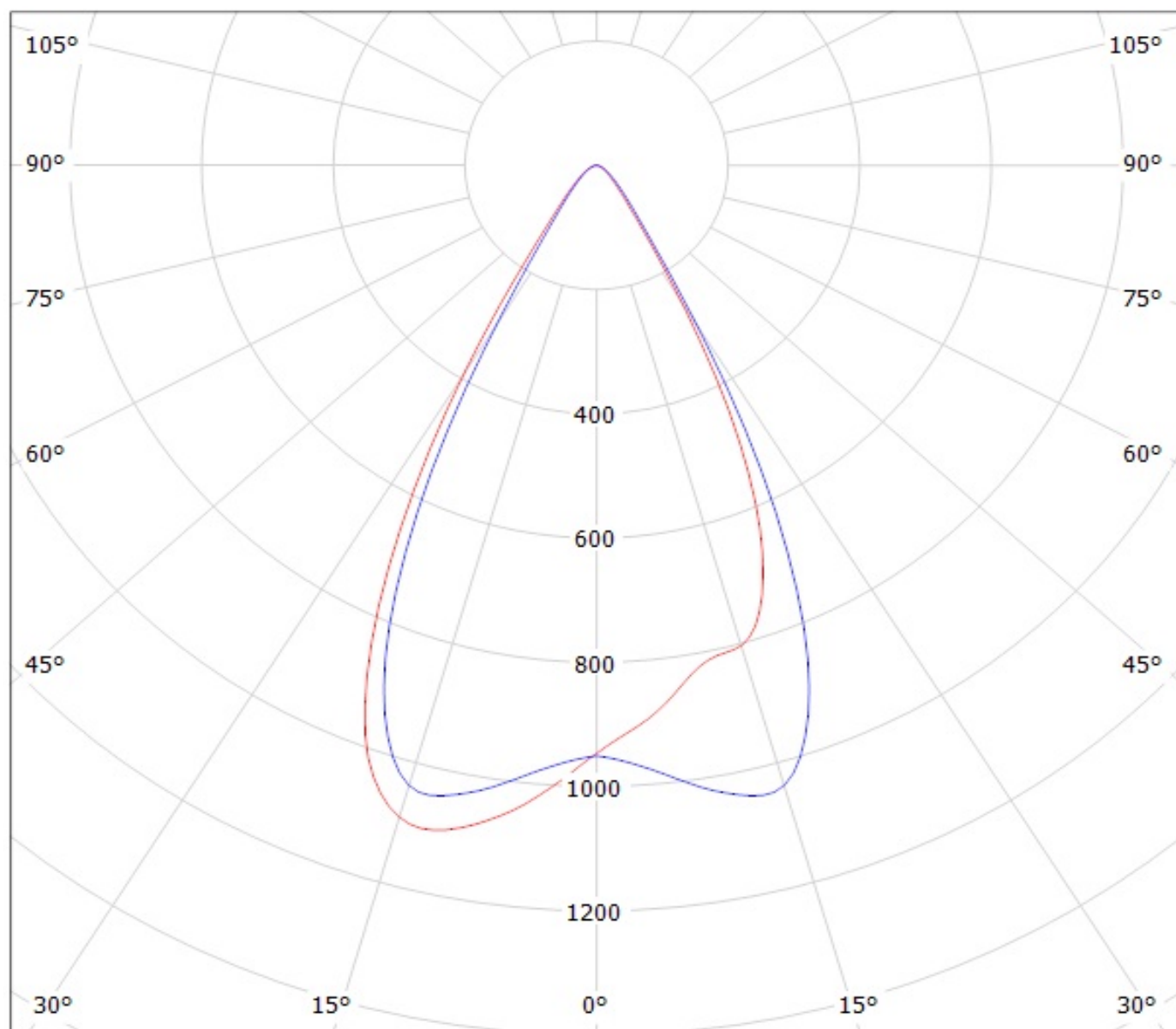


cd/klm

— C0 - C180 — C90 - C270

$\eta = 87\%$

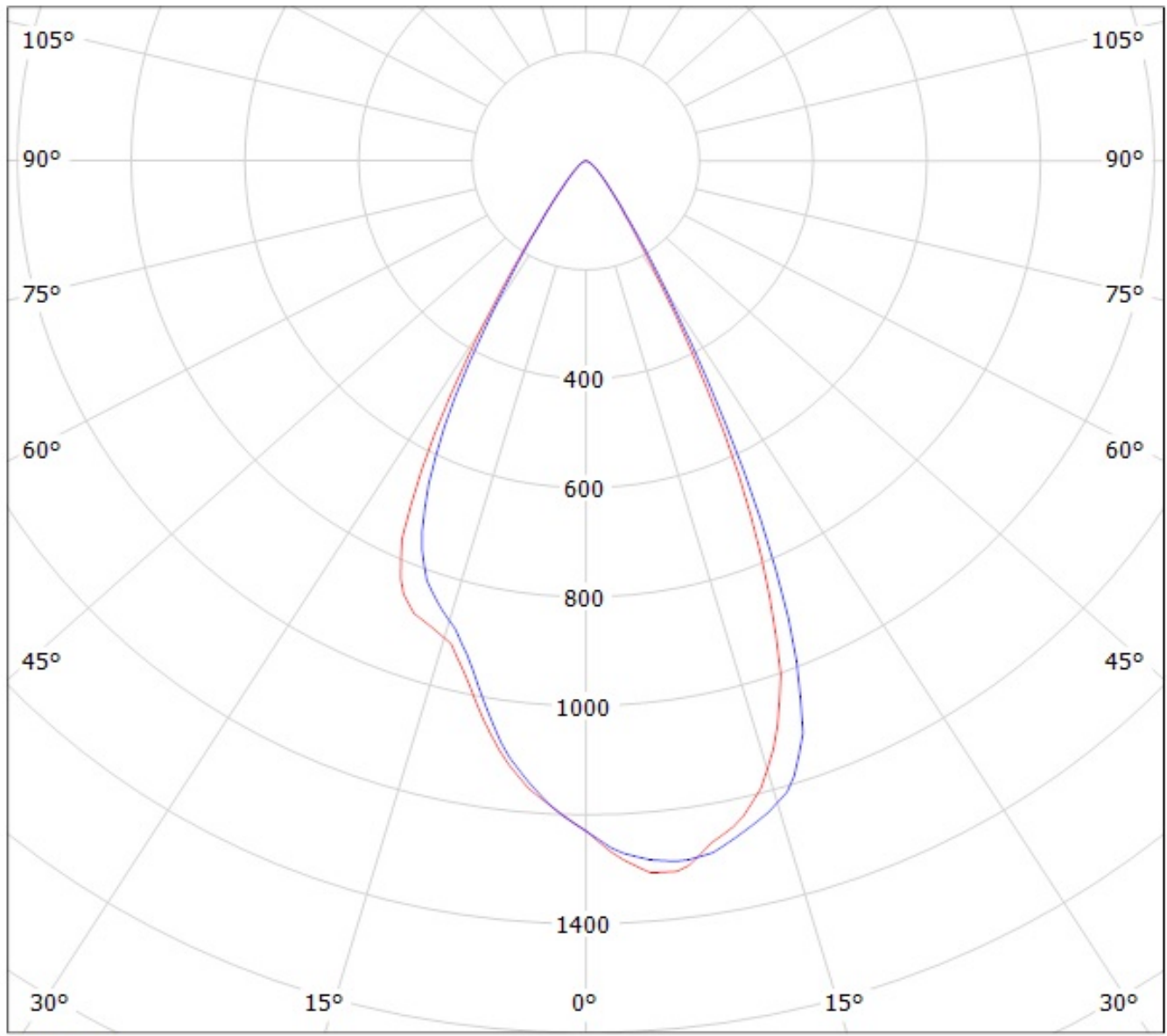
Valaisin: LEDIL OY CA12056_TINA2-W_(XP-G2) Eff.88.2%
Lamput: 1 x XP-G2 (113lm@250mA)



cd/klm

— C0 - C180 — C90 - C270

Luminaire: Ledil Oy CA12056_TINA2-W (CREE XP-E2 92 lm @ 250 mA) Efficiency=89%
Lamps: 1 x CREE XP-E2 92 lm @ 250 mA



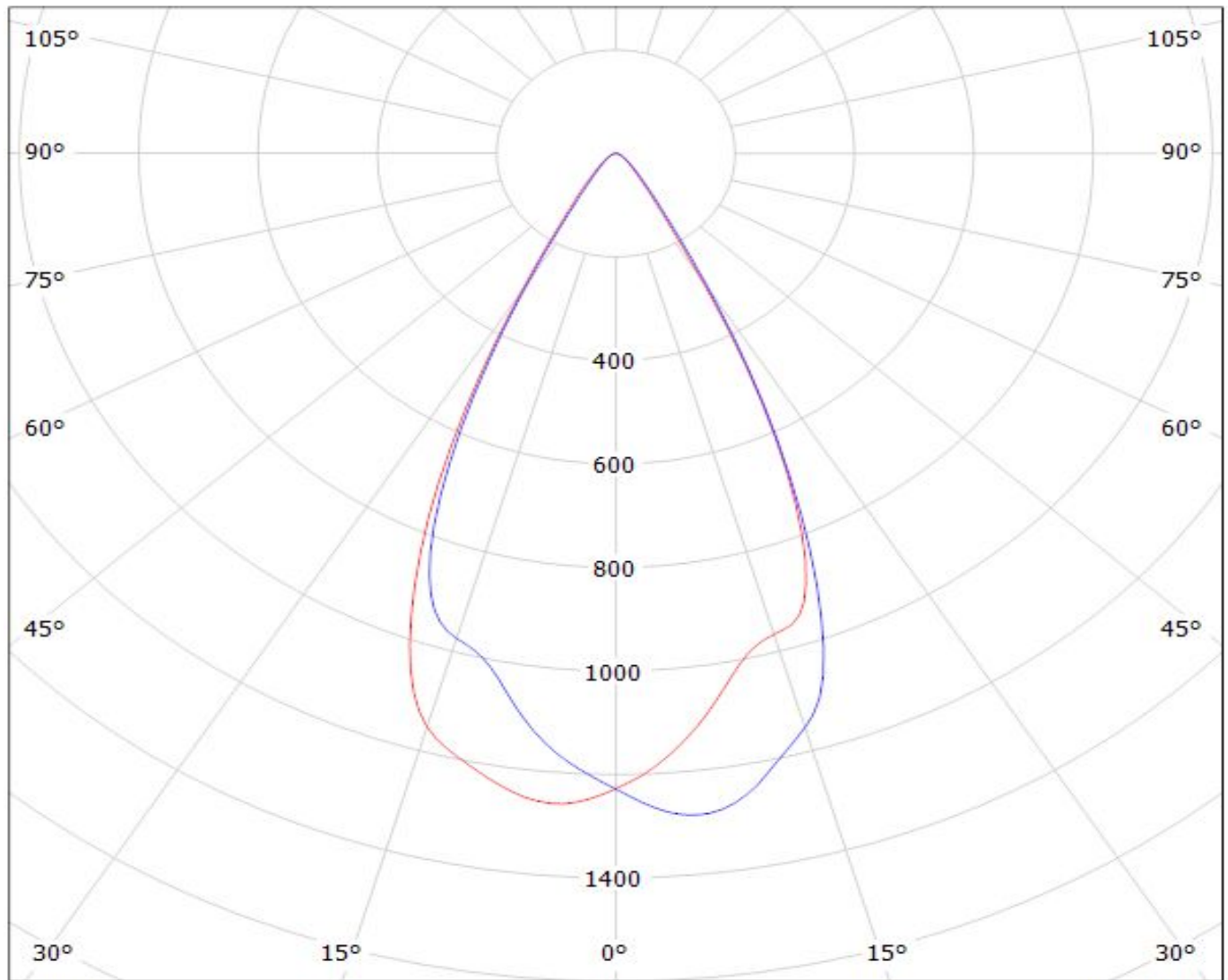
cd/klm

— C0 - C180 — C90 - C270

LEDiL Oy CA12056_TINA2_W_(LG3535_2W) Eff.88.8% / LDC (Polar)

Luminaire: LEDiL Oy CA12056_TINA2_W_(LG3535_2W) Eff.88.8%

Lamps: 1 x LG3535_2W (97.2479lm@250mA)



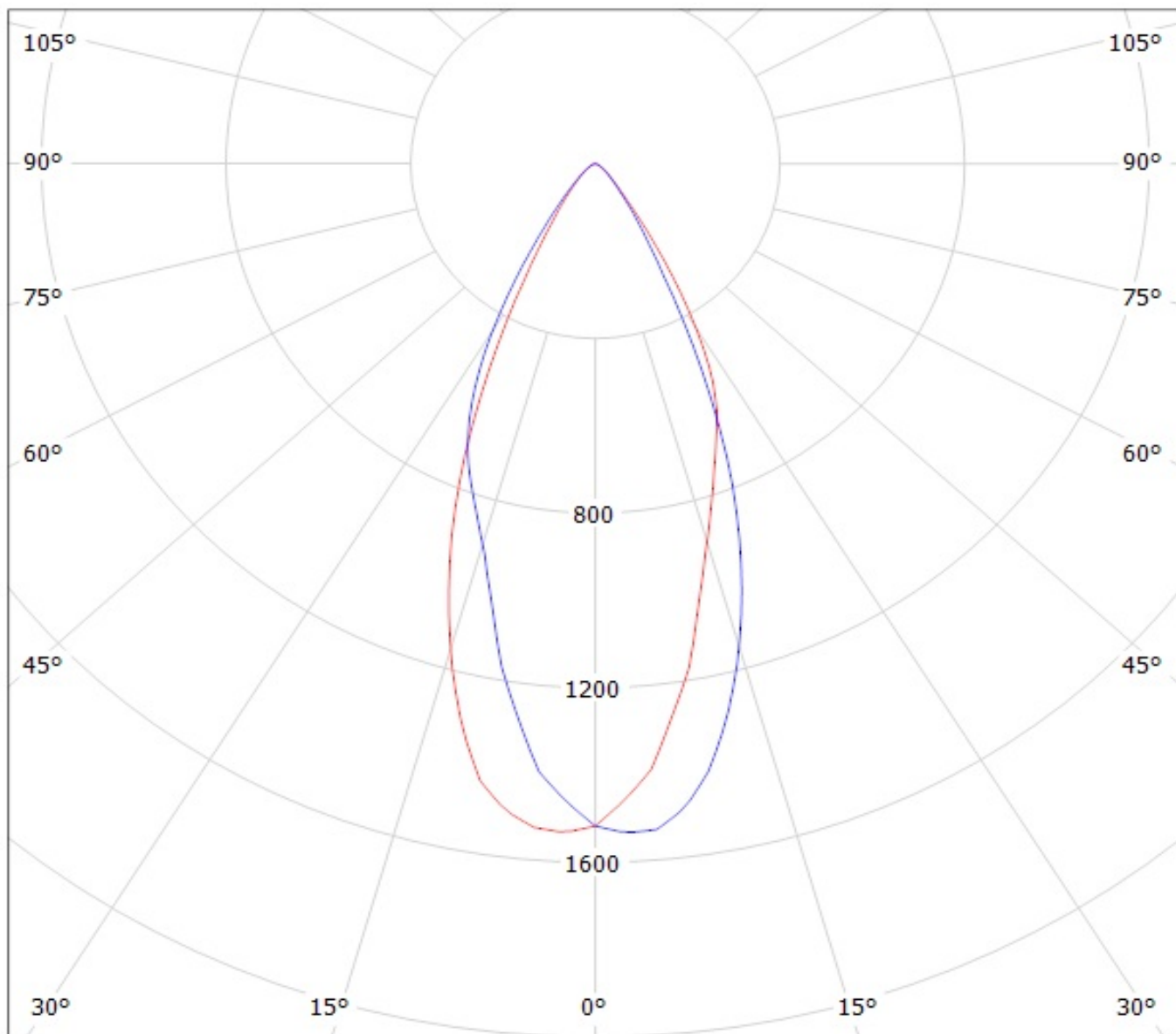
cd/klm

— C0 - C180

— C90 - C270

$\eta = 89\%$

Luminaire: Ledil Oy CA12056_TINA2-W (Seoul Z5 78lm @ 250mA) Efficiency=89%
Lamps: 1 x Seoul Z5 78lm @ 250mA



cd/klm

— C0 - C180

— C90 - C270

NOTE: The typical divergence will be changed by different color, chip size and chip position tolerance. The typical total divergence is the full angle measured where the luminous intensity is half of the peak value.