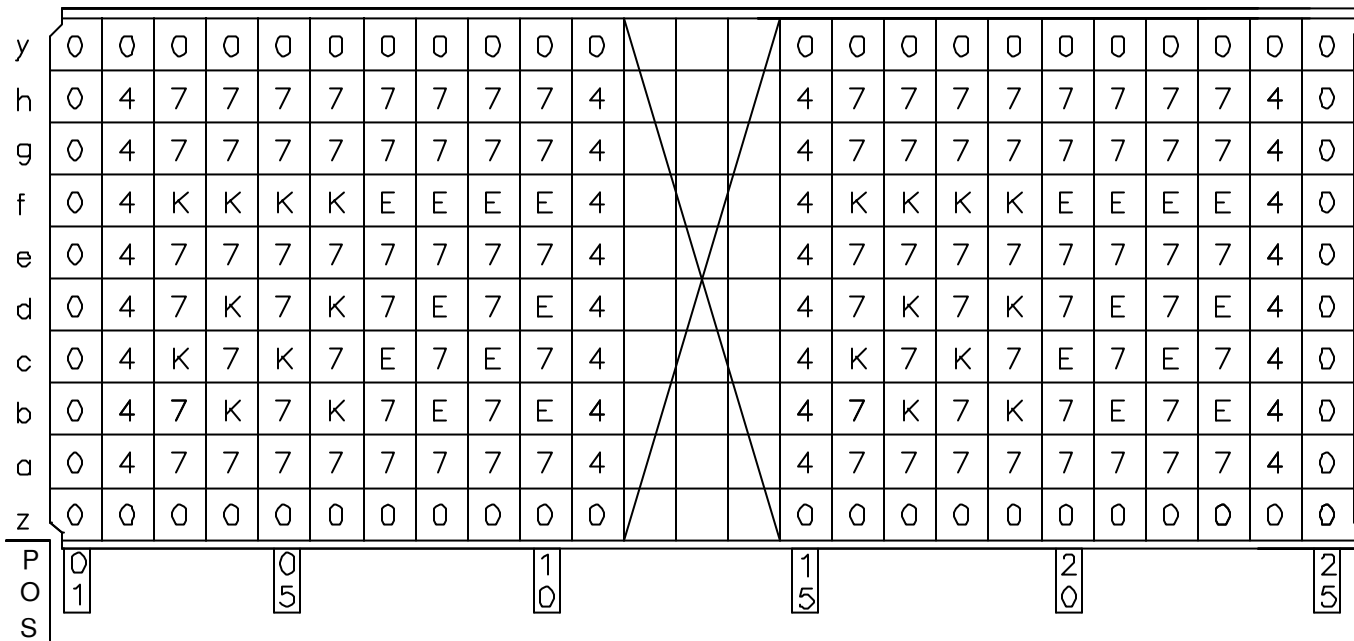
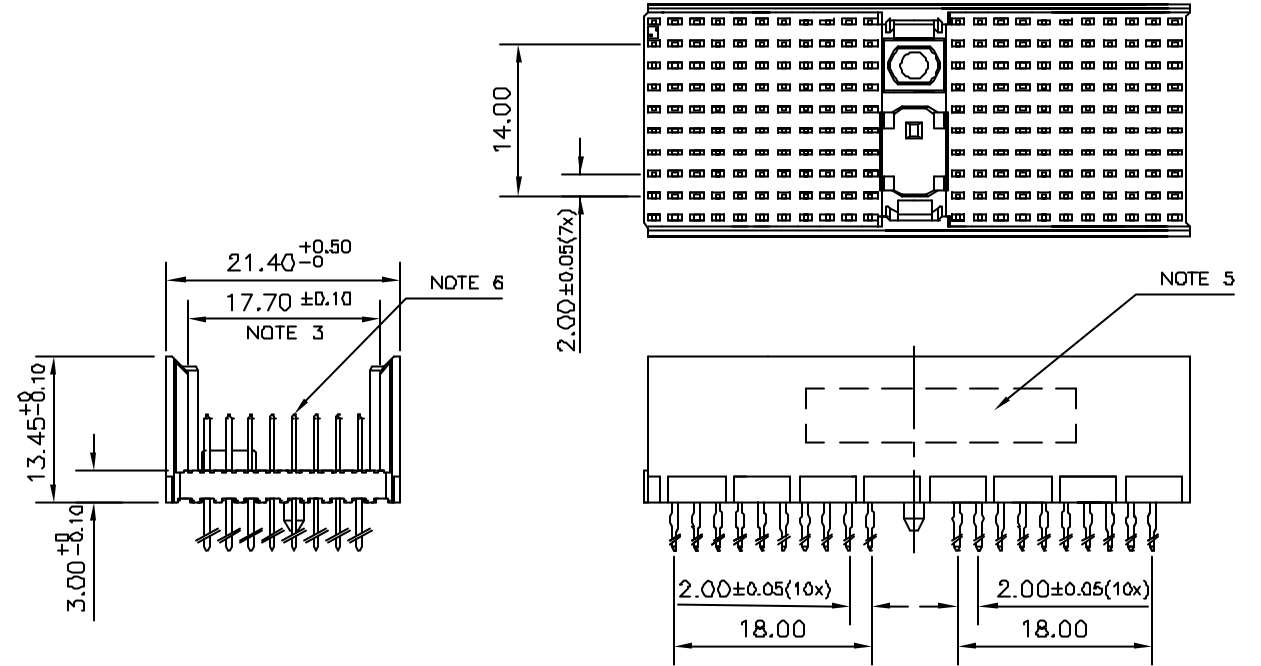


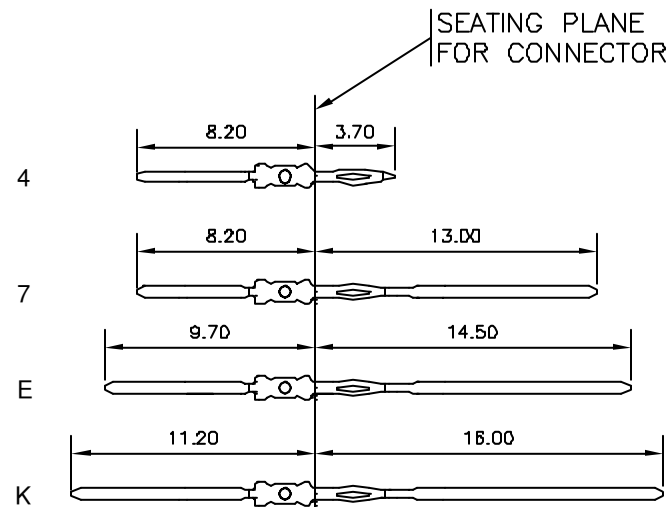
LOADING PATTERN MATING SIDE



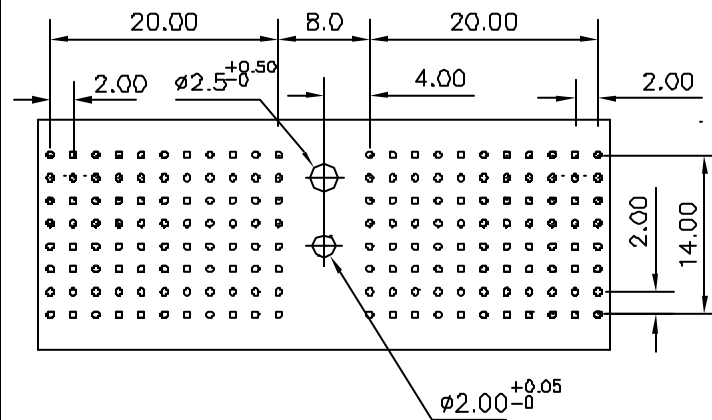
LOADED CONNECTOR ASSEMBLY
(FOR EXAMPLE)



CONTACT OVERVIEW



LAY-OUT P.C.B.-HOLE



HM2P87PK8190 ^{LF}
 LEAD FREE INDICATOR : LF = LEAD FREE (DIGIT 15 & 16)
 PLATING CODE (DIGIT 13 AND 14)
 (REF DRW NO. BS,C , 201844 , 003)

NOTES

1. THIS PRODUCT IS CSA APPROVED.
2. THIS PRODUCT IS UL RECOGNIZED.
3. MEASURED AT THE BOTTOM.
4. MATERIAL CONTACT: PHOSPHORBRONZE
 HOUSING: CREAM WHITE GLASS FILLED POLYESTER UL-94V0
5. CONNECTOR PRINTED WITH P/N AND DATE CODE.
6. FOR ACTUAL CONTACT LOADINGS, SEE LOADING PATTERN MATING SIDE.
7. SHAPE OF CONNECTOR HOUSING CAN ALTER DEPENDING ON PRODUCTION LOCATION
8. THE PRODUCT (LF) MEETS EUROPEAN UNION DIRECTIVES AND OTHER COUNTRY REGULATIONS AS DESCRIBED IN GS-22-008
9. FOR RECOMMENDED PTH DIMENSIONS REFER DRAWING : BS, A , 201572 , 001

PART NO: HM2P87PK8190----

mat'l. code SEE NOTE 4				surface ISO 1302 ✓		tolerance ISO 406 ISO 1101		projection MM		product family MILLIPACS			
ltr	ecn no	dr	date	tolerances unless otherwise specified			linear		scale		title		
A	105-0253	MINI	2005-11-30	0°±1°			0±0.2		—		MPACS 8+2R STR HDR PF CONN TYPE D		
B	106-0132	MINI	2006-08-02	dr			MINI K VANDANATH		2005-11-30		dwg no		
				enrg			BIJU K PAUL		2005-11-30		sheet 1 of 1		
				chr			BIJU K PAUL		2006-08-02		size		
				appd			BIJU K PAUL		2006-08-02		A3		
sheet index		revision sheet		B		1				type		Product Customer Drawing	



FCIconnect.com

Copyright FCI