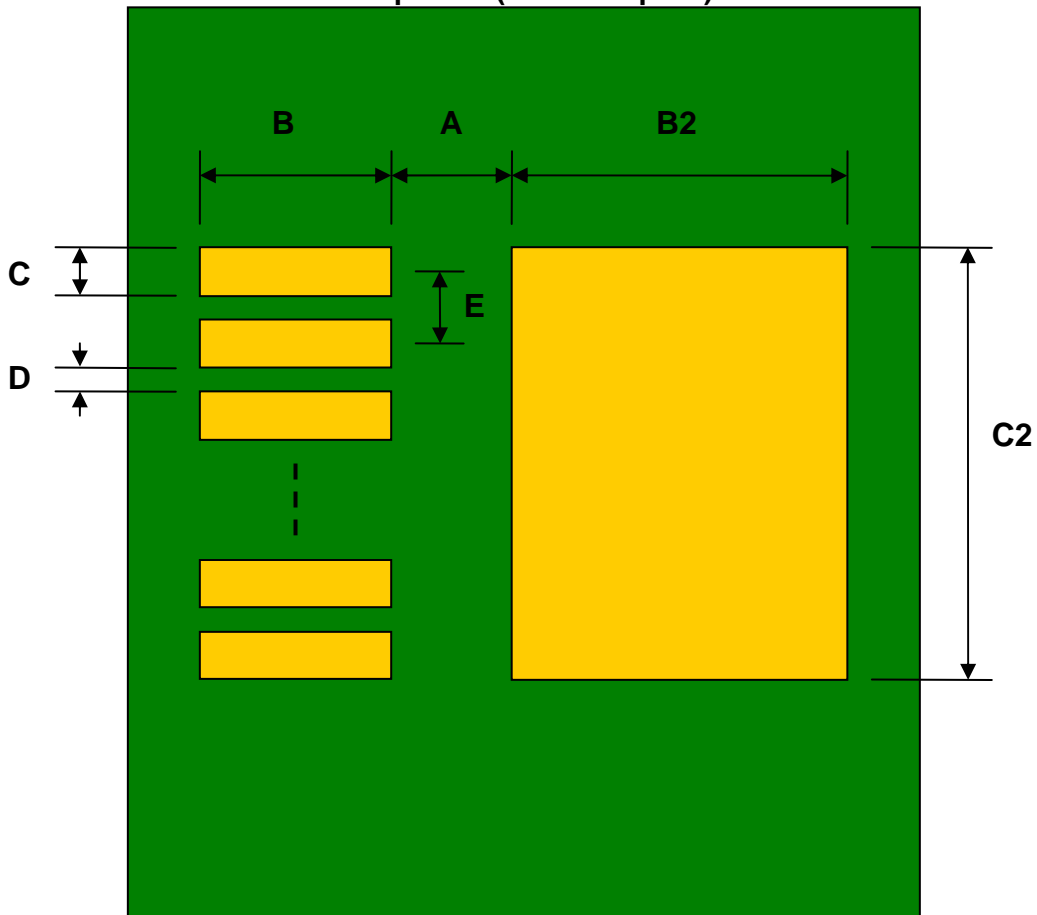


## TO-263-9 to DIP-18 SMT Adapter (38 mils pitch, 400 x 390 mils body)

REF.	DIMENSIONS					
	mm			inches		
	MIN.	TYP.	MAX.	MIN.	TYP.	MAX.
A		2.20				
B		4.60				
C		0.60				
B2		9.40				
C2		10.85				
D		0.37				
E		0.97				
F					0.600	
G					0.100	
H					0.025	

Top View (SMT Footprint)



(Representative drawing only - not to scale)

### Bottom View (DIP Pins)



(Representative drawing only - not to scale)

### Side View (DIP Pins)



(Representative drawing only - not to scale)