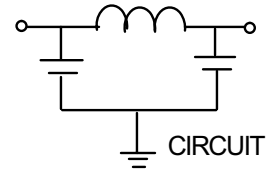
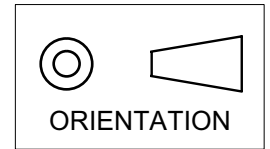


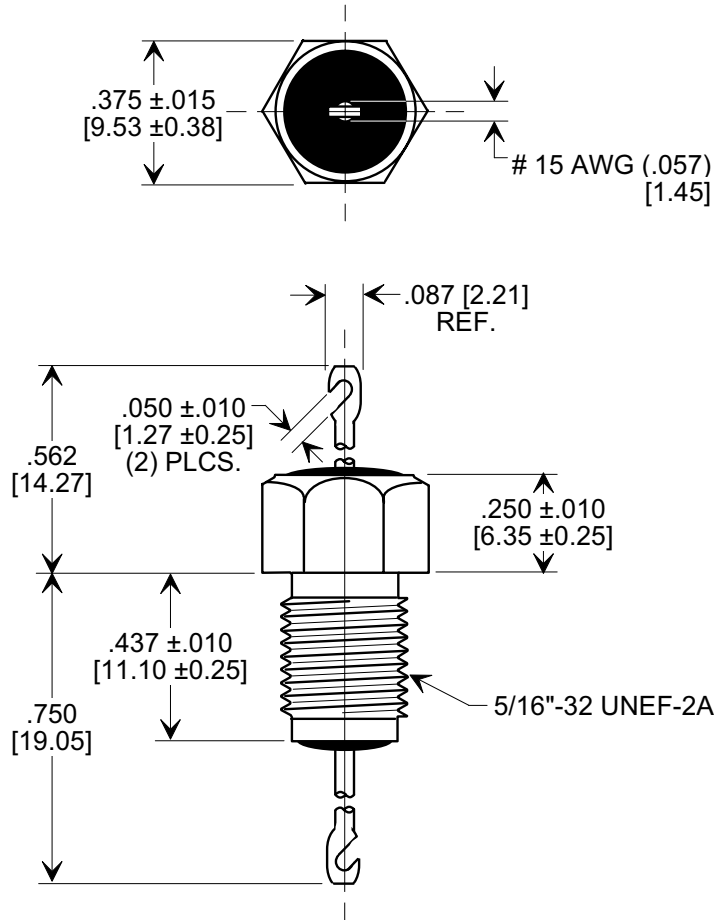
**MARKETING SALES DRAWING**

**DIMENSIONS IN INCHES - DO NOT SCALE THIS DRAWING**  
**DIMENSIONS IN METRIC - [ ]**

This drawing is the property of Tusonix, Inc., and may not be used, reproduced, published or disclosed to others without expressed authorization by Tusonix Inc.



**Electrical Testing**  
 per Tusonix standard  
 test plans and Mil-Std-202  
 Test Methods.



**NOTES:**

1. SUPPLIED WITH HEX NUT AND INTERNAL TOOTH LOCK WASHER.
2. PARTS WILL BE MARKED M15733/61.

2000	500 VDC / 350 VAC	25 AC	I.R. MIN. @ 100 (VDC.)	DWV	----	55	70	70
	125 °C				10 MHz	100 MHz	1 GHz	10 GHz
MIN. CAP. (pF)	WORKING VOLTAGE	CURRENT (A)	10 G Ω	1250 VDC	MINIMUM NO LOAD INSERTION LOSS (dB) AT 25°C PER MIL-STD -220			

X-2015 Rev-0 REVISION RECORD Original Release C.O. 20070423-1-01	0	<b>TUSONIX</b> TUCSON, ARIZONA	TOLERANCES unless otherwise specified 2 PLC. DECIMAL ± N/A 3 PLC. DECIMAL ± .031 [0.79]	Title <b>MIL-15733/61-0004 BUSHING STYLE FILTER</b>			
	ANGLES ± N/A		Drawn S.M. 04-23-07	Scale 2 X			
	Approved R.L. 04-23-07		<b>A</b>		<b>4206-501</b>		