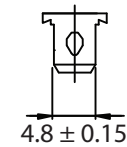
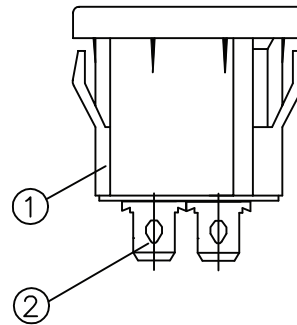
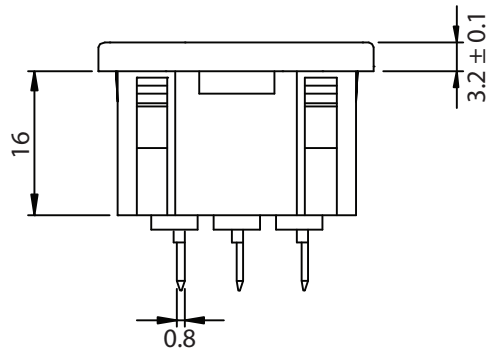
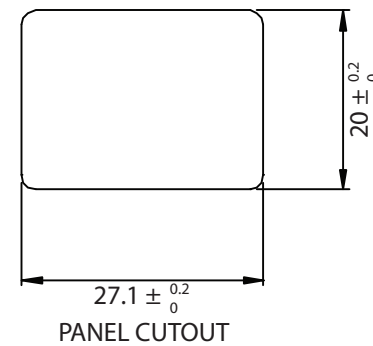
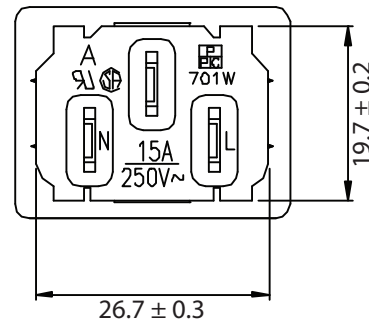
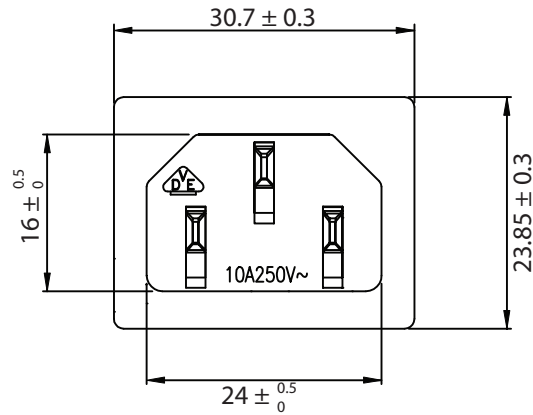


THESE DRAWINGS ARE THE PROPERTY OF QUALTEK ELECTRONICS AND NOT TO BE REPRODUCED FOR OR COMMUNICATED TO A THIRD PARTY WITHOUT THE EXPRESS WRITTEN PERMISSION OF AN OFFICER OF QUALTEK ELECTRONICS.

REVISION			
REV.	DESCRIPTION	DATE	APPROVED
B	RoHS Compliancy	06-01-06	DP



**CONTROLLED**

NOTES:

RATING:

UL, CSA: 15A 250V AC  
 VDE: 10A 250V AC  
 APPROVALS: UL, CSA, VDE  
 PANEL THICKNESS: 0.8mm~1.5mm  
 RoHS COMPLIANT

2	Contact PIN Bronze Strip t=2mm Tin-Plated	3			
1	Body Insulator Nylon A216-BK	1			
Dim range (mm)		Tolerance +/- (mm)		<b>Qualtek Electronics Corp.</b> <b>PPC DIVISION</b> Part Number: <b>701W-X2/07</b> <span style="border: 1px solid green; padding: 2px;">RoHS Compliant</span>	
0-1	0.15	Description: <b>AC RECEPTACLE</b>			
1-6	0.20	UNIT: mm		REV. B	
6-18	0.30	Drawn / Date		Checked / Date	
18-50	0.50	B.Zhang		04-16-02	
50-120	0.70	04-16-02		JH / 04-16-02	
120-250	0.90				
250-500	1.20				