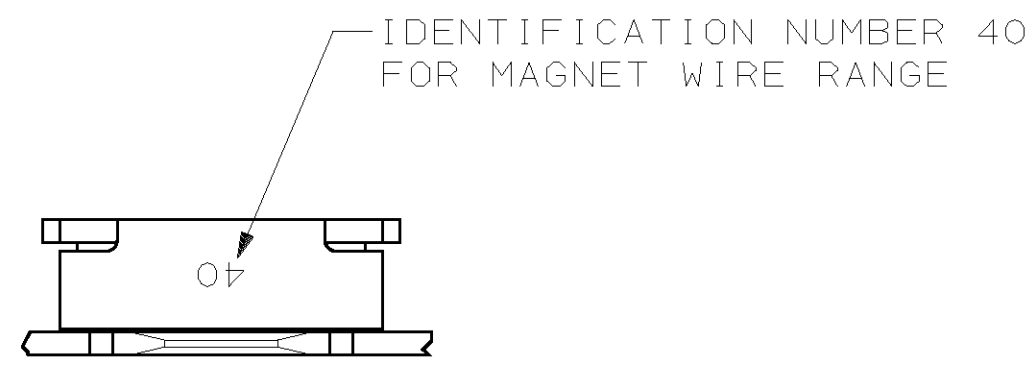
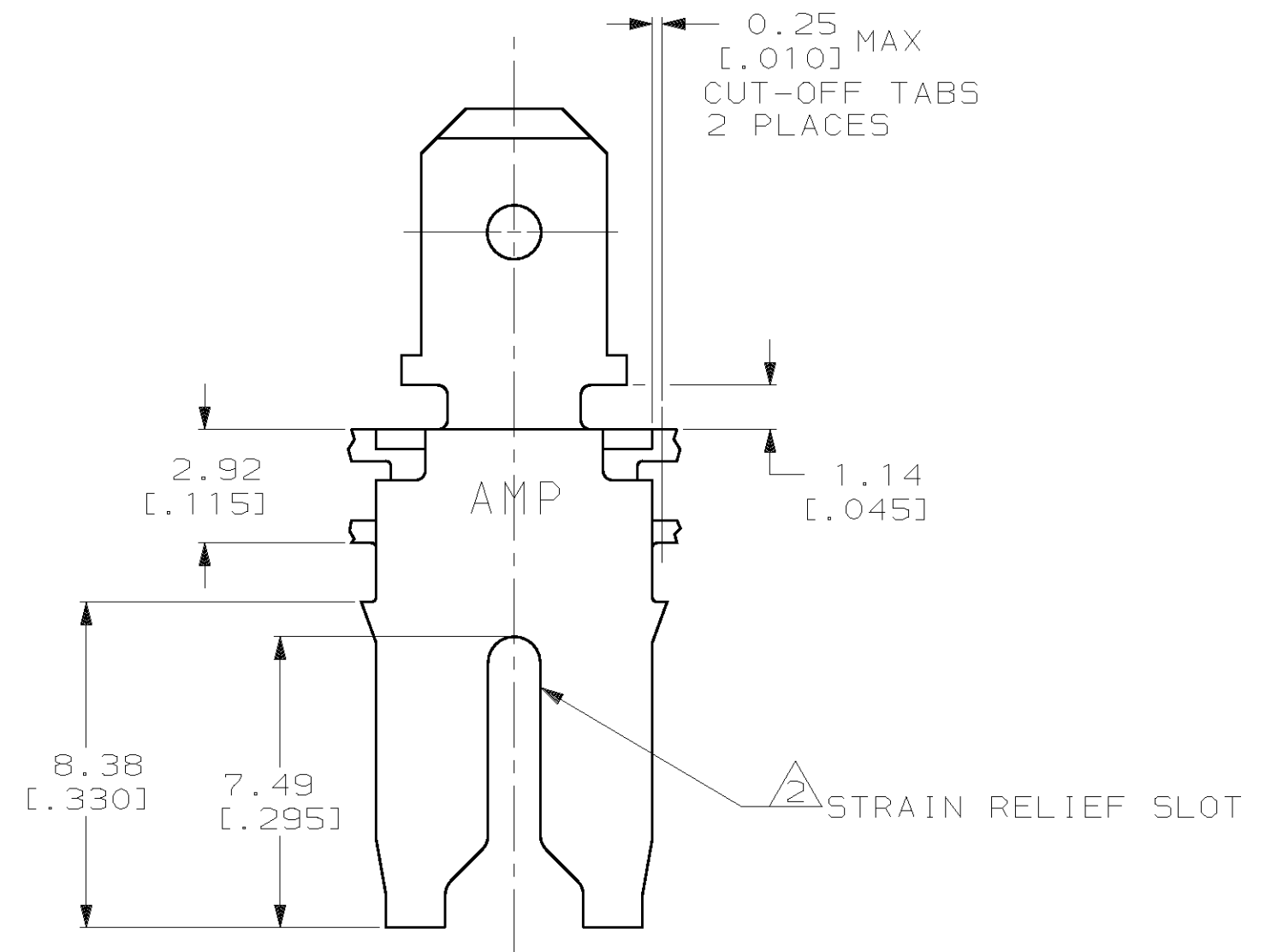
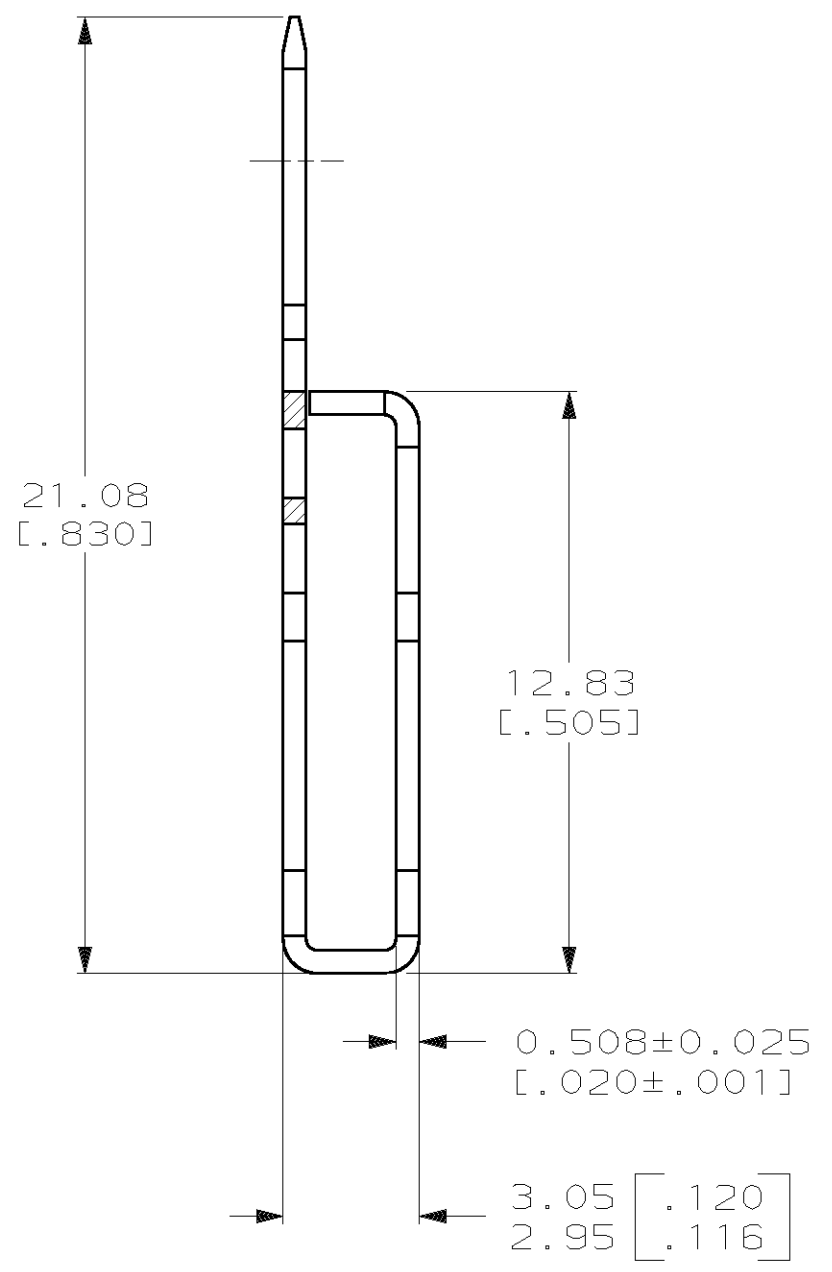
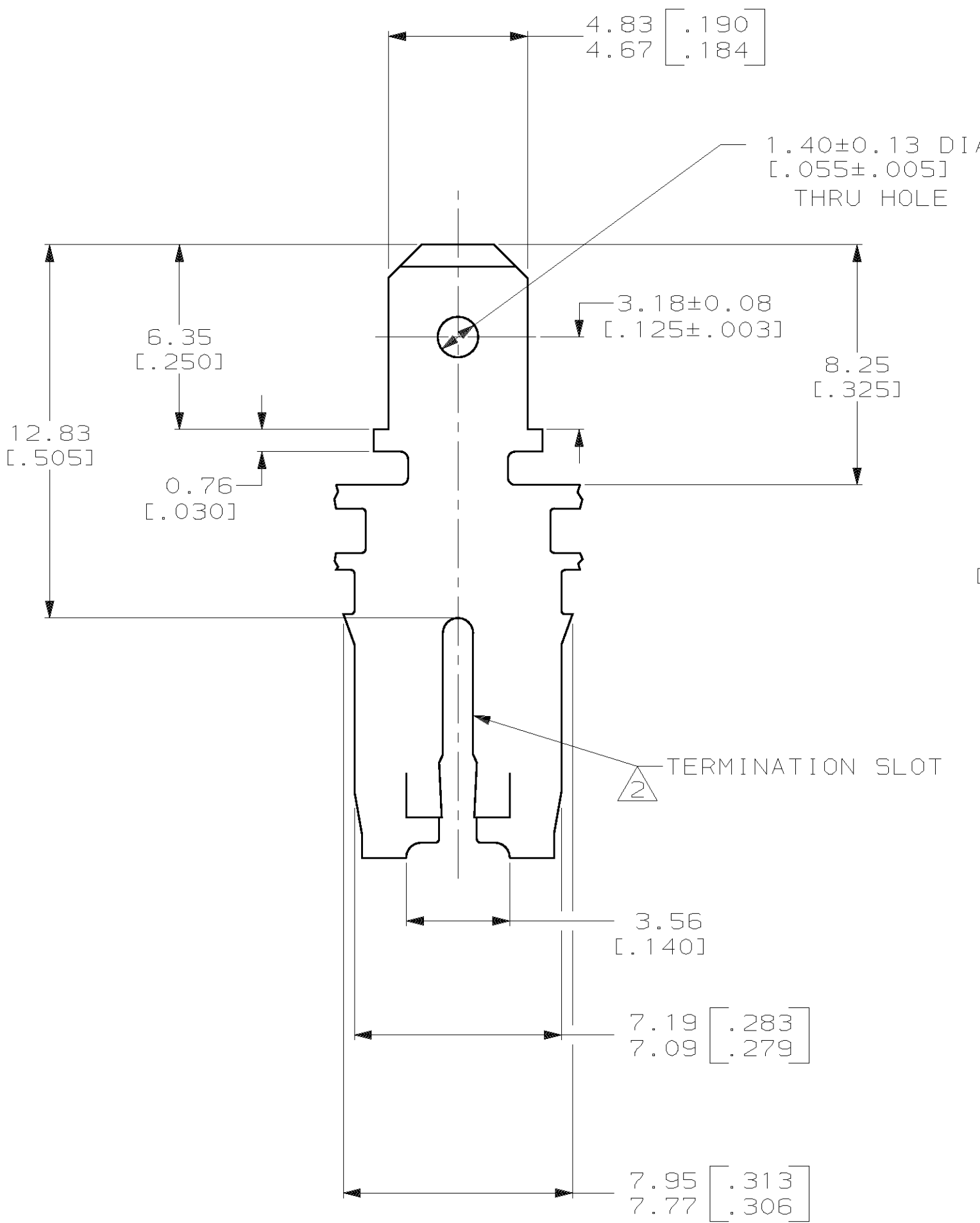


THIS DRAWING IS UNPUBLISHED. RELEASED FOR PUBLICATION
 (C) COPYRIGHT 19 BY AMP INCORPORATED. ALL RIGHTS RESERVED.

LOC		DIST		REVISIONS			
P	LTR	DESCRIPTION	DATE	DWN	APVD		
AF	50	A	REV PER 0L10-0368-97	8/29/97	JR	NN	



- CONTINUOUS STRIP ON REELS WITH TERMINALS LOCATED ON 8.38±0.08 [.330±.003] CENTERS.
- SLOT TERMINATES EITHER A SINGLE OR DOUBLE MAGNET WIRE OF THE SAME SIZE AND TYPE. COPPER RANGE: 1.29-1.45mm [#16-#15] AWG.
- AFTER INSERTION INTO PLASTIC HOLDER, TAB PORTION MUST BE BENT OVER 45° TO 90° OR POTTED-IN TO PREVENT PULL-OUT WHEN MATING RECEPTACLE IS DISCONNECTED.



PROPOSED DESIGN
 NOT RELEASED FOR
 PRODUCTION

63996-1
 PART NUMBER

THIS DRAWING IS A CONTROLLED DOCUMENT.		DWN MICHAEL S. FEHER 12JUN97	AMP Incorporated Harrisburg, PA 17105-3608	
DIMENSIONS: mm [INCHES]		CHK RICHARD GRZYBOWSKI 18JUN97	NAME NELSON E. NEFF 18JUN97	
TOLERANCES UNLESS OTHERWISE SPECIFIED:		APVD 108-2053 114-2066	PRODUCT SPEC	
0 PLC ±-	1 PLC ±-	APPLICATION SPEC	TAB, 4.75 [.187] FASTON,™ MAG-MATE™	
2 PLC ±0.25 [.010]	3 PLC ±-	114-2066	RESTRICTED TO	
4 PLC ±-	ANGLES ±-	WEIGHT -	A2 00779 C-63996	
MATERIAL 4M BRASS	FINISH 0.002032 [.000080] MIN TIN PER MIL-T-10727	CUSTOMER DRAWING	SCALE 6:1 SWEET 1 OF 1 REV A	

NOT the LATEST REVISION