

# Flush-type connector - SACC-E-M8MS-5CON-M10/0,5 DN - 1424234

Please be informed that the data shown in this PDF Document is generated from our Online Catalog. Please find the complete data in the user's documentation. Our General Terms of Use for Downloads are valid (<http://download.phoenixcontact.com>)



Bus system flush-type plug-in connector, plug, DeviceNet, 5-pos., M8, front/screw mounting with M10 fastening thread, with 0.5 m TPE litz wire, 5 x 0.25 mm<sup>2</sup>



## Key commercial data

Packing unit	0
Minimum order quantity	1
GTIN	 4 046356 712460
Custom tariff number	85366990
Country of origin	GERMANY

## Technical data

### General data

Rated current at 40°C	3 A
Rated voltage	30 V
Number of positions	5
Volume resistance	≤ 3 mΩ
Insulation resistance	≥ 100 MΩ
Length of cable	0.5 m
Ambient temperature (operation)	-25 °C ... 85 °C (Male connector / female connector)

### General characteristics

Standards/regulations	M8 plug-in connector IEC 61076-2-104
Coding	B - inverse
Surge voltage category	II
Pollution degree	3
Degree of protection	IP67
Contact material	Cu alloy
Contact surface material	Au
Contact carrier material	PA 66

# Flush-type connector - SACC-E-M8MS-5CON-M10/0,5 DN - 1424234

## Technical data

### General characteristics

Material, knurls	Zinc die-cast, nickel-plated
Mounting type	Front mounting M10
Connection method	Individual wires
Status display	No

### Conductor data

Cable type	PVC litz wire
AWG signal line	26
Wire colors	Gray, red, white, black, blue
Conductor material	Tin-plated Cu litz wires
Ambient temperature (operation)	-25 °C ... 85 °C (cable, fixed installation)

## Classifications

### ETIM

ETIM 3.0	EC002061
ETIM 4.0	EC002635
ETIM 5.0	EC002635

### UNSPSC

UNSPSC 11	31251501
UNSPSC 12.01	31251501
UNSPSC 13.2	31251501
UNSPSC 6.01	31251501
UNSPSC 7.0901	31251501

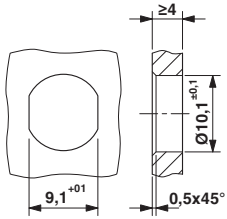
### eCl@ss

eCl@ss 4.0	27250313
eCl@ss 4.1	27250313
eCl@ss 5.0	27250313
eCl@ss 5.1	27143423
eCl@ss 6.0	27143423
eCl@ss 7.0	27449001

## Drawings

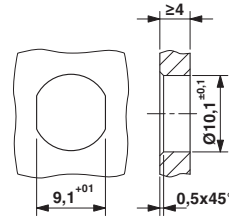
# Flush-type connector - SACC-E-M8MS-5CON-M10/0,5 DN - 1424234

Dimensioned drawing



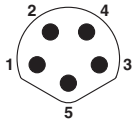
Mounting panel with feed-through hole

Dimensioned drawing



Mounting panel with feed-through hole

Schematic diagram



Pin assignment M8 male connector, 5-pos., B-coded, view male side