

ATLANTIC VERSION TERMINATOR INTERFACE ADAPTER	PART NUMBER	REVISION	DESCRIPTION	FEED TYPE	CONVERT TO	PART NUMBERS REQUIRED					
	2266700-1	C	FINE CRIMP HEIGHT ADJUST	MECHANICAL	PNEUMATIC FEED	2119950-1	1338685-1	5-18022-5	2119641-1	2119799-1	2063440-1
	2266700-2	C	FINE CRIMP HEIGHT ADJUST	PNEUMATIC	SERVO LATCH PLATE	2119951-1	-	8-2266700-5	1901094-3	-	2168400-6 (QUANTITY 2)
					SMART APPLICATOR	2161326-1	-	8-2266700-4	-	-	
					MECHANICAL FEED	2119949-1	1338685-1	5-18022-5	2119653-1	-	-
	2266700-5	C	FINE CRIMP HEIGHT ADJUST	SERVO LATCH PLATE ⁴	SERVO LATCH PLATE	2119951-1	-	8-2266700-5	1901094-3	-	2168400-6 (QUANTITY 2)
					SMART APPLICATOR	2161326-1	-	8-2266700-4	-	-	
	2266700-6	C	NON-CRIMP HEIGHT ADJUST	SERVO LATCH PLATE ⁴	MECHANICAL FEED	2119949-1	1338685-1	5-18022-5	2119653-1	-	-
2266700-7	C	FINE CRIMP HEIGHT ADJUST	NONE	PNEUMATIC FEED	2119950-1	1338685-1	5-18022-5	2119641-1	2119799-1	2063440-1	
7-2266700-7	A	CRIMP TOOLING KIT	-	-	-	-	-	-	-	-	

APPLICATOR DATA		
CRIMP	SIZE	TYPE
WIRE	2.03 mm [.080]	F
INSUL	4.32 mm [.170]	O

APPLICATOR INSTRUCTIONS
408-10389

TERMINAL DATA: DELPHI TERMINAL DELPHI PACKARD CRIMP SPECIFICATION	
TERMINAL NAME: TERM F M/P 280 SEALED TANGLESS	
WIRE STRIP LENGTH	INSULATION DIAMETER RANGE
4.72-5.50 mm [.186-.217 IN]	∅ 1.60-2.15
TERMINAL APPLICATION SPECIFICATION	
12110847 PAGE 1 6 7 9 OF 22	

TERMINALS APPLIED				
TE TERMINAL	DELPHI TERMINAL	TE SEAL	DELPHI SEAL	CABLE DIAMETER
1572394-1	12110847	1949092-1	15324985	∅ 1.60-2.15
		1949807-1	15324982	∅ 2.03-2.85
		1572716-3	15324980	∅ 2.81-3.49

WIRE SIZE	CRIMP HEIGHT mm [INCH]	CRIMP HEIGHT REFERENCE SETTING
1.00mm2	1.50+/-0.05 [.059+/- .002]	7.7
0.80mm2	1.40+/-0.05 [.055+/- .002]	8.9

- ¹ RECOMMENDED SPARE PARTS
- ² GREASE BEARING SURFACES LIGHTLY
- 3. LUBRICATE DAILY PER THE APPLICATOR INSTRUCTION SHEET SUPPLIED WITH THE APPLICATOR.
- ⁴ APPLICATOR SPECIFIC DATA TO BE ENTERED INTO BLANK MEMORY CHIP AT ASSEMBLY. SEE BELOW FOR PART NUMBER:
 MECHANICAL FEED WITH "SMART APPLICATOR" CONVERSION: 8-2266700-4
 PNEUMATIC FEED WITH "SMART APPLICATOR" CONVERSION: 8-2266700-4
 SERVO FEED WITH "FINE CRIMP HEIGHT ADJUST": 8-2266700-5
 SERVO FEED WITH "NON-CRIMP HEIGHT ADJUST": 8-2266700-6
- 5. ADJUSTMENT OF THE STRIPPER MAY BE REQUIRED WHEN MOVING THE APPLICATOR BETWEEN BENCH AND LEADMAKER APPLICATIONS.
- ⁶ APPLY PART NUMBER 1-23419-5 LOCTITE TO THREADS OF ITEM 62. APPLY PART NUMBER 2-23419-6 LOCTITE TO THREADS OF ITEM 242. FOR -6 ONLY APPLY PART NUMBER 1-23419-5 LOCTITE TO THREADS OF ITEM 37.
- ⁷ GREASE THREADS, GROOVE AND O-RING ON ITEMS 35 & 252.
- ⁸ MAGNET, ITEM 166 MUST BE ORIENTED CORRECTLY IN ORDER TO PROPERLY ACTUATE THE COUNTER.
- ⁹ CRIMP HEIGHT REFERENCE SETTING WAS THE SETTING USED WHEN THE APPLICATOR WAS QUALIFIED AT THE FACTORY. ADJUSTMENT MAY BE NECESSARY WHEN RUNNING APPLICATOR IN THE FIELD.
- ¹⁰ SPARE FEED CAM STORAGE LOCATION REFER TO INSTRUCTION SHEET FOR ADDITIONAL INFORMATION.
- ¹¹ TO CONVERT THE APPLICATOR TO A NON-CARRIER CUTTING STYLE, REMOVE ITEM 13 AND ATTACH TO THE LOCATION ON THE BACK SIDE OF THE HOUSING. REFER TO INSTRUCTION SHEET FOR ADDITIONAL INFORMATION.
- ¹² WHEN ASSEMBLING A NON CRIMP HEIGHT ADJUST APPLICATOR (-6) USE SHIMS FROM ITEM 260 TO ACHIEVE A NOMINAL SHIM HEIGHT OF 4.30.
- ¹³ THIS APPLICATOR APPLIES TERMINAL WITH A SEAL.
- ¹⁴ APPLY TORO-SEAL IN ALLEN SOCKET TO FILL HOLE AFTER FLAT HD HAS BEEN ADJUSTED TO CORRECT HEIGHT AT QUALIFICATION. APPLY #1-23419-5 LOC-TITE TO THREADS.
- ¹⁵ CUT TO LENGTH AT ASSEMBLY.

***WARNING**
 ON INSTALLATION, SET WIRE DISC, ITEM 40 TO LARGEST WIRE SIZE SETTING. USE OF SETTINGS BELOW MINIMUM REQUIRED CRIMP HEIGHT SETTING WILL CAUSE DAMAGE TO CRIMP TOOLING.

¹²	-	-	1	-	-	-	2119957-2	APPLICATOR SHIM PACK			260
¹³	-	1	-	1	1	1	8-21084-0	O-RING, .676 ID, .070 DIA. MAT.			252
	-77	-7	-6	-5	-2	-1	PART NO	DESCRIPTION			ITEM NO

ATLANTIC VERSION
 Shown on sheets 1 of 4 & 2 of 4
 (Pacific version shown on sheets 3 of 4 & 4 of 4)

SET UP GAUGE	LOC	DIST	REVISIONS					
2119599-1	A	66	P	L	M	DATE	OWN	APVD
			A			RELEASED	26MAR2015	GH TE
			A1			ECR-16-004559	11APR2016	RS LZ
			B			ECR-17-003381	08MAR2017	TB TE
			C			ECR-17-004124	22MAR2017	TB TE

-	-	-	-	1	-	2119640-1	PUSH ROD, AIR FEED			250
-	-	-	-	1	-	1803259-1	BUSHING, FLANGED			249
-	-	-	-	1	-	2119641-1	FEED CAM, AIR FEED			248
-	1	-	1	1	1	2119798-1	DETENT PIN			247
-	1	-	1	1	1	1-22279-3	SPRING, COMPRESSION			246
-	-	1	-	-	-	2119758-1	RAM, AMP STYLE, SIDE FEED, NON-ADJ.			245
-	1	1	1	1	1	2119082-2	CAM, SNAIL, INSULATION ADJUSTMENT			244
-	1	1	1	1	1	2079764-1	WASHER, WAVE SPRING, CREST-TO-CREST			243
-	1	1	1	1	1	2119083-1	RETAINER, INSULATION DIAL			242
-	1	1	1	1	1	7-18023-7	SCR, SKT HD CAP M3 X 4.0			241
-	-	2	2	-	-	2168400-6	SHCS, LOW HEAD, RoHS, M5 X 16			240
-	-	-	-	-	1	2119580-1	MECHANICAL FEED ASSEMBLY			239
-	-	-	-	-	1	2063440-1	AIR FEED MODULE			238
-	-	1	1	-	-	2119740-2	TAG, IDENTIFICATION			213
-	-	1	1	-	-	1901094-3	SPACER, FEEDER			198
-	-	-	-	2	-	21045-3	RING, RETAIN, EXTERN, 3/16 CRESCENT			172
-	1	1	1	1	1	994969-1	MAGNET, RARE EARTH HIGH ENERGY			166
-	REF	REF	REF	REF	REF	994970-2	COUNTER, MAGNETIC			164
-	-	-	-	1	-	240638-1	SPRING, FEED FINGER			163
-	-	-	-	1	-	3-23627-7	PIN, RETAIN, GRVD, 3/16 X .854			137
-	-	-	-	1	-	2119799-1	HOLDER, FEED FINGER, AF			136
-	-	REF	REF	-	-	SEE NOTE 4	MEMORY CHIP, PROGRAMMED			135
-	-	1	1	-	-	1633743-1	SERVO FEED LATCH ASM			133
-	-	REF	REF	-	-	2119944-1	FEED FINGER ASSEMBLY, SF			117
-	1	1	1	1	1	455888-4	SPACER, CRIMPER			82
-	1	1	1	1	1	2119956-1	DOCUMENTATION PACKAGE			71
-	1	-	-	1	1	2119740-1	TAG, IDENTIFICATION			67
-	2	2	2	2	2	2168078-1	SCREW, DRIVE, RH, RoHS, 2 x .188			66
-	1	-	1	1	1	2119793-1	LIMITER, ADJUSTMENT BOLT			63
-	3	-	3	3	3	992763-5	SCR, SET, SOC, CONE POINT, M3 x 4.0			62
-	1	1	1	1	1	2079383-4	SCR, BHSC, RoHS (M4 X 8)			60
-	-	-	-	1	1	5-18022-5	SCR, HEX HD CAP, M4 X 6.0			59
-	1	1	1	1	1	985575-3	SCR, FLT SKT HD CAP M3 X 10.0			57
-	-	-	-	1	1	1338685-1	PAWL, FEED			56
-	4	4	4	4	4	2168400-1	SHCS, LOW HEAD, RoHS, M4 X 12			54
-	2	2	2	2	2	2168083-8	SCR, SKT HD CAP, RoHS, M4 X 16			53
-	1	1	1	1	1	5018030-1	NUT, HEX, REG, RoHS, M3			52
-	1	1	1	1	1	811242-5	BUMPER, HOLD DOWN			51
-	1	1	1	1	1	690753-2	SPACER, TONKER			50
-	-	-	-	1	2	18023-9	SCR, SKT HD CAP M4 X 6.0			49
-	-	-	-	-	1	2119652-1	FEED CAM, PRE FEED			48
-	-	-	-	-	1	2119653-1	FEED CAM, POST FEED			47
-	1	1	1	1	1	2119656-9	APPLICATOR BASIC ASSEMBLY, SF			46
-	1	-	1	1	1	2119370-1	RAM, AMP STYLE, SIDE FEED			44
-	1	1	1	1	1	2079383-7	SCR, BHSC, RoHS (M8 X 25)			41
-	1	-	1	1	1	2119645-1	DISC, NUMBERED FA WIRE ADJUSTMENT			40
-	1	-	1	1	1	2119957-1	APPLICATOR SHIM PACK			39
-	1	1	1	1	1	1-2119644-2	RAM WASHER, PRECISION			38
-	1	1	1	1	1	2119085-1	FA HEAD, ATLANTIC STYLE			37
-	1	-	1	1	1	2119092-1	BOLT, ADJUSTMENT			35
-	1	1	1	1	1	1752356-1	SUPPORT, TERMINAL			34
-	2	2	2	2	2	2079383-5	SCR, BHSC, RoHS (M4 X 20)			33
-	1	1	1	1	1	2161328-1	HEX HEAD, FLANGED, M5 x 8mm LONG			32
-	1	1	1	1	1	1-1320908-2	SPACER, STRIP GUIDE			30
-	1	1	1	1	1	2119959-1	ASSEMBLY, STRIP GUIDE			29
-	1	1	1	1	1	455888-3	SPACER, CRIMPER			28
-	1	1	1	1	1	1320928-2	STRIP GUIDE			24
-	1	1	1	1	1	2168083-2	SCR, SKT HD CAP, RoHS, M4 X 8.0			21
-	2	2	2	2	2	1-18028-2	WASHER, FLAT, REG M4			20
-	1	1	1	1	1	2119533-1	STRIPPER, SIDE FEED			19
-	1	1	1	1	1	2119806-1	INSERT, SHEAR			13
-	1	1	1	1	1	3-22280-3	SPRING, COMPRESSION			12
-	1	1	1	1	1	1-356885-4	STOP, SHEAR			11
-	1	1	1	1	1	2119805-1	SHEAR HOLDER, FRONT			10
-	1	1	1	1	1	1803095-1	FLOATING SHEAR, FRONT			9
-	1	1	1	1	1	7-1633131-4	ANVIL, COMBINATION .080			8
-	1	1	1	1	1	240641-5	SPACER			7
-	-	-	-	-	-	-	-			6
-	1	1	1	1	1	2119781-1	DEPRESSOR, SHEAR			5
-	1	1	1	1	1	238011-2	BLOCK, CRIMPER SPACER			4
-	1	1	1	1	1	4-1633965-2	CRIMPER, INSULATION O PREMIUM			3
-	1	1	1	1	1	455888-6	SPACER, CRIMPER			2
-	1	1	1	1	1	5-456405-3	CRIMPER, WIRE PREMIUM			1

DIMENSIONS:		TOLERANCES UNLESS OTHERWISE SPECIFIED:		DRAWING NO		RESTRICTED TO	
mm	0 PLC	±		00779	©=2266700		
	1 PLC	±					
	2 PLC	±					
	3 PLC	±					
	4 PLC	±					
	ANGLES	±					
	FINISH	±					

LOC	DIST	REV	DATE	BY	APP'D
A	66				

FEED TYPE MECHANICAL



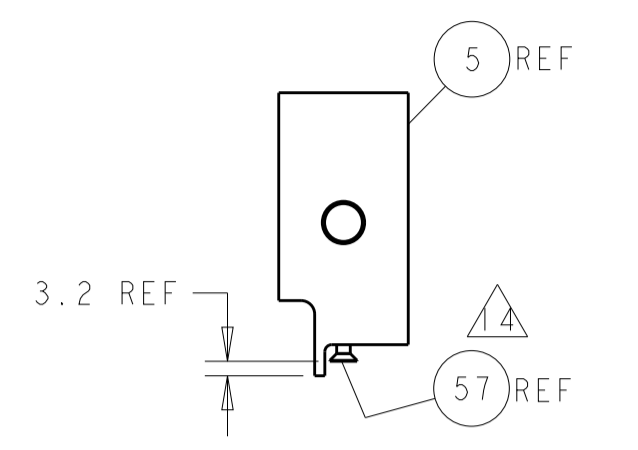
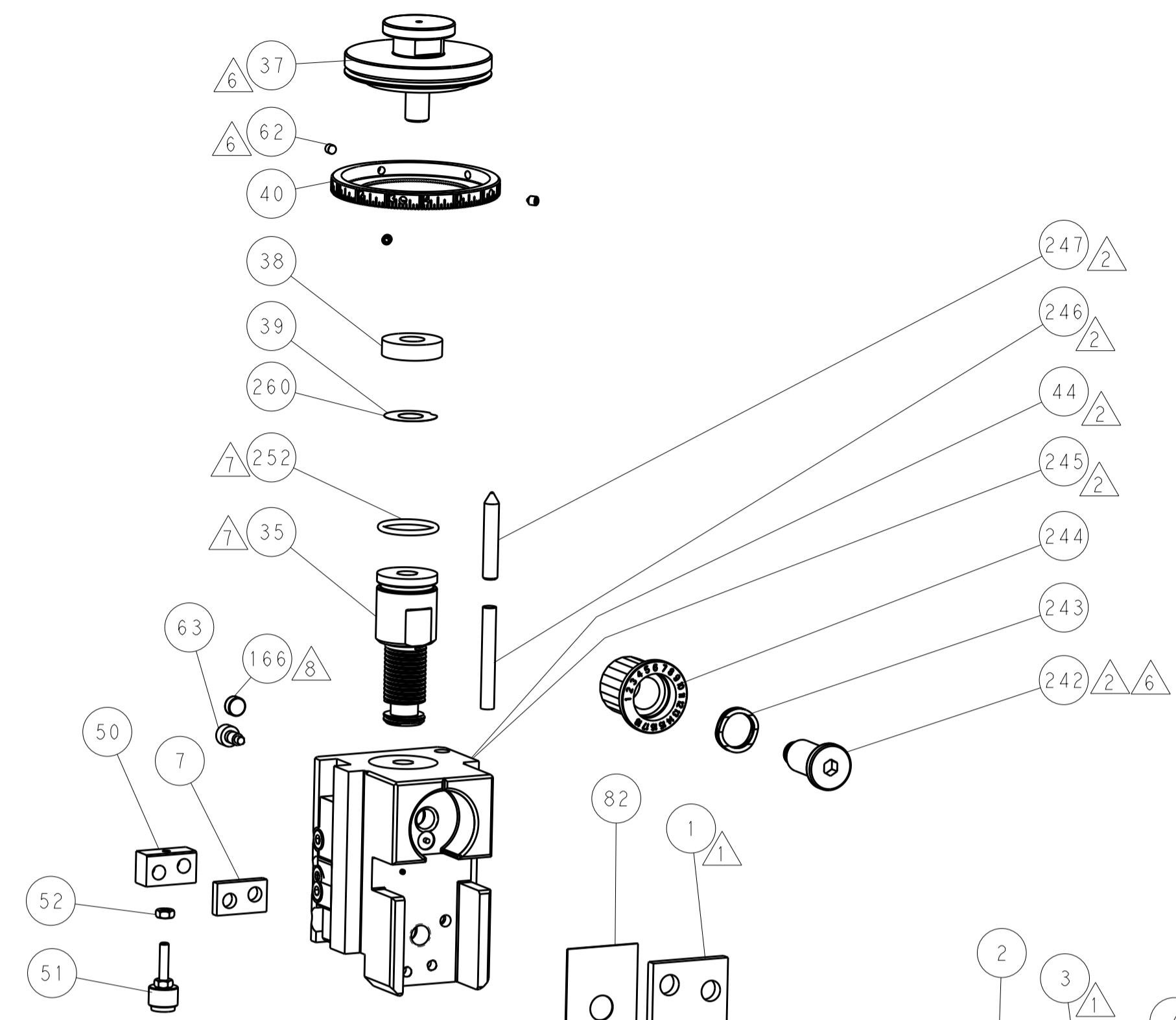
PNEUMATIC



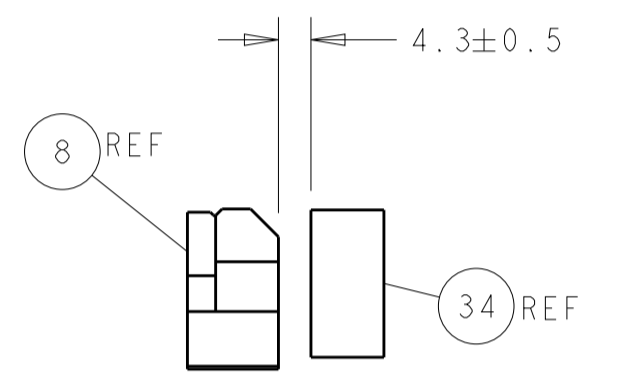
SERVO LATCH PLATE



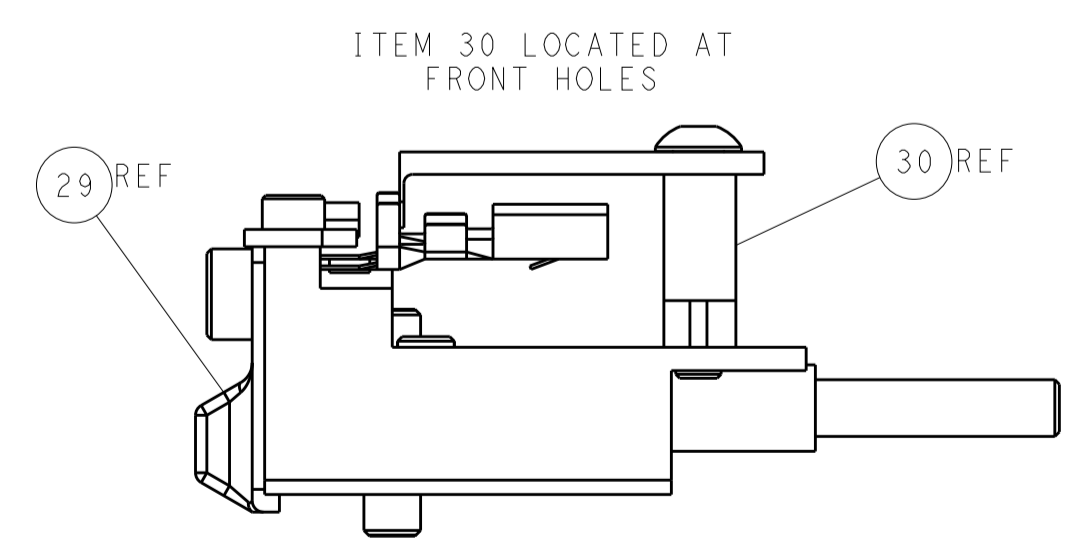
CAM POSITIONS



SHEAR DEPRESSOR DETAIL



TERMINAL SUPPORT LOCATION



FEED TRACK POSITION GUIDE BY INSULATION BARREL

ATLANTIC VERSION
 Shown on sheets 1 of 4 & 2 of 4
 (Pacific version shown on sheets 3 of 4 & 4 of 4)

DIMENSIONS:		TOLERANCES UNLESS OTHERWISE SPECIFIED:		DWN: HOFFNER 2MAR2015		TE Connectivity	
mm	0 PLC	±		CHK: T. ELBIN 3MAR2015	NAME: Ocean Side Feed Applicator		Harrisburg, PA 17105-3608
	1 PLC	±		APP'D: T. ELBIN 3MAR2015	RESTRICTED TO:		
	2 PLC	±		PRODUCT SPEC			
	3 PLC	±		APPLICATION SPEC			
	4 PLC	±		WEIGHT		Customer Accessible Production Drawing	
MATERIAL:	FINISH:			SCALE: 1:2	SHEET 2 OF 4	REV C	

PACIFIC VERSION TERMINATOR INTERFACE ADAPTER	PART NUMBER	REVISION	DESCRIPTION	FEED TYPE	APPLICATOR STYLE CONVERSION CHART						
					CONVERT TO	PART NUMBERS REQUIRED					
	2-2266700-1	C	FINE CRIMP HEIGHT ADJUST	MECHANICAL	PNEUMATIC FEED	2119950-1	1338685-1	5-18022-5	2119641-2	2119799-1	2063440-1
					SERVO LATCH PLATE	2119951-1	-	8-2266700-5	1901094-3	-	2168400-6 (QUANTITY 2)
					SMART APPLICATOR	2161326-1	-	8-2266700-4	-	-	-
	2-2266700-2	C	FINE CRIMP HEIGHT ADJUST	PNEUMATIC	MECHANICAL FEED	2119949-1	1338685-1	5-18022-5	2119653-2	-	-
					SERVO LATCH PLATE	2119951-1	-	8-2266700-5	1901094-3	-	2168400-6 (QUANTITY 2)
					SMART APPLICATOR	2161326-1	-	8-2266700-4	-	-	-
	2-2266700-5	C	FINE CRIMP HEIGHT ADJUST	SERVO LATCH PLATE ⁴	MECHANICAL FEED	2119949-1	1338685-1	5-18022-5	2119653-2	-	-
					PNEUMATIC FEED	2119950-1	1338685-1	5-18022-5	2119641-2	2119799-1	2063440-1
	2-2266700-7	C	FINE CRIMP HEIGHT ADJUST	NONE	-	-	-	-	-	-	-
	7-2266700-7	A	CRIMP TOOLING KIT	-	-	-	-	-	-	-	-

APPLICATOR DATA		
CRIMP SIZE	TYPE	
WIRE 2.03 mm [.080]	F	
INSUL 4.32 mm [.170]	O	
APPLICATOR INSTRUCTIONS 408-10389		

TERMINAL DATA: DELPHI TERMINAL DELPHI PACKARD CRIMP SPECIFICATION				
TERMINAL NAME: TERM F M/P 280 SEALED TANGLESS				
WIRE STRIP LENGTH		INSULATION DIAMETER RANGE		
4.72-5.50 mm [.186-.217 IN]		∅	∆	
TERMINAL APPLICATION SPECIFICATION	12110847 PAGE 1 6 7 9 OF 22	-	-	-
TERMINALS APPLIED				
TE TERMINAL	DELPHI TERMINAL	TE SEAL	DELPHI SEAL	CABLE DIAMETER
1572394-1	12110847	1949092-1	15324985	∅1.60-2.15
		1949807-1	15324982	∅2.03-2.85
		1572716-3	15324980	∅2.81-3.49

WIRE SIZE	CRIMP HEIGHT mm [INCH]	CRIMP HEIGHT REFERENCE SETTING
1.00mm2	1.50+/-0.05 [.059+/-0.002]	7.7
0.80mm2	1.40+/-0.05 [.055+/-0.002]	8.9

- RECOMMENDED SPARE PARTS
- GREASE BEARING SURFACES LIGHTLY
- 3. LUBRICATE DAILY PER THE APPLICATOR INSTRUCTION SHEET SUPPLIED WITH THE APPLICATOR.
- APPLICATOR SPECIFIC DATA TO BE ENTERED INTO BLANK MEMORY CHIP AT ASSEMBLY. SEE BELOW FOR PART NUMBER:
 MECHANICAL FEED WITH "SMART APPLICATOR" CONVERSION: 8-2266700-4
 PNEUMATIC FEED WITH "SMART APPLICATOR" CONVERSION: 8-2266700-4
 SERVO FEED WITH "FINE CRIMP HEIGHT ADJUST": 8-2266700-5
- 5. ADJUSTMENT OF THE STRIPPER MAY BE REQUIRED WHEN MOVING THE APPLICATOR BETWEEN BENCH AND LEADMAKER APPLICATIONS.
- APPLY PART NUMBER 1-23419-5 LOCTITE TO THREADS OF ITEM 62. APPLY PART NUMBER 2-23419-6 LOCTITE TO THREADS OF ITEM 242.
- GREASE THREADS, GROOVE AND O-RING ON ITEMS 139 & 152.
- MAGNET MUST BE ORIENTED CORRECTLY IN ORDER TO PROPERLY ACTUATE THE COUNTER.
- CRIMP HEIGHT REFERENCE SETTING WAS THE SETTING USED WHEN THE APPLICATOR WAS QUALIFIED AT THE FACTORY. ADJUSTMENT MAY BE NECESSARY WHEN RUNNING APPLICATOR IN THE FIELD.
- SPARE FEED CAM STORAGE LOCATION REFER TO INSTRUCTION SHEET FOR ADDITIONAL INFORMATION.
- TO CONVERT THE APPLICATOR TO A NON-CARRIER CUTTING STYLE, REMOVE ITEM 13 AND ATTACH TO THE LOCATION ON BACK SIDE OF THE HOUSING. REFER TO INSTRUCTION SHEET FOR ADDITIONAL INFORMATION.
- THIS APPLICATOR APPLIES TERMINAL WITH A SEAL.
- APPLY TORQ-SEAL IN ALLEN SOCKET TO FILL HOLE AFTER FLAT HD HAS BEEN ADJUSTED TO CORRECT HEIGHT AT QUALIFICATION. APPLY #1-23419-5 LOC-TITE TO THREADS.
- CUT TO LENGTH AT ASSEMBLY.

***WARNING**
 ON INSTALLATION, SET WIRE DISC, ITEM 40 TO LARGEST WIRE SIZE SETTING. USE OF SETTINGS BELOW MINIMUM REQUIRED CRIMP HEIGHT SETTING WILL CAUSE DAMAGE TO CRIMP TOOLING.

PACIFIC VERSION
 Shown on sheets 3 of 4 & 4 of 4
 (Atlantic version shown on sheets 1 of 4 & 2 of 4)

SET UP GAUGE	LOC	DIST	REVISIONS			
2119599-1	A	66	REV	DATE	BY	APPD
			-	SEE SHEET 1	-	-

REV	DATE	BY	APPD	DESCRIPTION	ITEM NO
-	1	1	1	2119782-1 FINE ADJUST HEAD ASM, PACIFIC STYLE	251
-	-	-	1	2119640-1 PUSH ROD, AIR FEED	250
-	-	-	1	1803259-1 BUSHING, FLANGED	249
-	1	1	1	1-22279-3 SPRING, COMPRESSION	246
-	1	1	1	2119082-2 CAM, SNAIL, INSULATION ADJUSTMENT	244
-	1	1	1	2079764-1 WASHER, WAVE SPRING, CREST-TO-CREST	243
-	1	1	1	2119083-1 RETAINER, INSULATION DIAL	242
-	1	1	1	7-18023-7 SCR, SKT HD CAP M3 X 4.0	241
-	-	2	-	2168400-6 SHCS, LOW HEAD, RoHS, M5 X 16	240
-	-	-	1	2119580-1 MECHANICAL FEED ASSEMBLY	239
-	-	-	1	2063440-1 AIR FEED MODULE	238
-	-	1	-	2119740-2 TAG, IDENTIFICATION	213
-	-	1	-	1901094-3 SPACER, FEEDER	198
-	-	-	2	21045-3 RING, RETAIN, EXTERN, 3/16 CRESCENT	172
-	1	1	1	994969-1 MAGNET, RARE EARTH HIGH ENERGY	166
-	REF	REF	REF	994970-2 COUNTER, MAGNETIC	164
-	-	-	1	240638-1 SPRING, FEED FINGER	163
-	1	1	1	8-21084-1 O-RING, .801 ID, .070 DIA, MAT.	152
-	-	-	1	2119641-2 FEED CAM, AIR FEED	151
-	1	1	1	2119798-2 DETENT PIN	145
-	1	1	1	2079383-8 SCR, BHSC, RoHS (M4 X 16)	144
-	4	4	4	2168400-5 SHCS, LOW HEAD, RoHS, M4 X 20	143
-	-	-	1	2119653-2 FEED CAM, POST FEED	142
-	1	1	1	1-2119656-0 APPLICATOR BASIC ASSEMBLY, SF	141
-	1	1	1	2119650-1 RAM, ASIAN STYLE, SIDE FEED	140
-	1	1	1	2119092-2 BOLT, ADJUSTMENT	139
-	-	-	1	3-23627-7 PIN, RETAIN, GRVD, 3/16 X .854	137
-	-	-	1	2119799-1 HOLDER, FEED FINGER, AF	136
-	-	REF	-	SEE NOTE 4 MEMORY CHIP, PROGRAMMED	135
-	-	1	-	1633743-1 SERVO FEED LATCH ASM	133
-	-	REF	-	2119944-1 FEED FINGER ASSEMBLY, SF	117
-	1	1	1	455888-4 SPACER, CRIMPER	82
-	1	1	1	2119956-1 DOCUMENTATION PACKAGE	71
-	1	-	1	2119740-1 TAG, IDENTIFICATION	67
-	2	2	2	2168078-1 SCREW, DRIVE, RH, RoHS, 2 x .188	66
-	1	1	1	2119793-1 LIMITER, ADJUSTMENT BOLT	63
-	3	3	3	992763-5 SCR, SET, SOC, CONE POINT, M3 X 4.0	62
-	-	-	1	5-18022-5 SCR, HEX HD CAP, M4 X 6.0	59
-	1	1	1	985575-3 SCR, FLT SKT HD CAP M3 X 10.0	57
-	-	-	1	1338685-1 PAWL, FEED	56
-	2	2	2	2168083-8 SCR, SKT HD CAP, RoHS, M4 X 16	53
-	1	1	1	5018030-1 NUT, HEX, REG, RoHS, M3	52
-	1	1	1	811242-5 BUMPER, HOLD DOWN	51
-	1	1	1	690753-2 SPACER, TONKER	50
-	-	-	1	18023-9 SCR, SKT HD CAP M4 X 6.0	49
-	-	-	1	2119652-1 FEED CAM, PRE FEED	48
-	1	1	1	2079383-7 SCR, BHSC, RoHS (M8 X 25)	41
-	1	1	1	2119645-1 DISC, NUMBERED FA WIRE ADJUSTMENT	40
-	1	1	1	2119957-1 APPLICATOR SHIM PACK	39
-	1	1	1	1-2119644-2 RAM WASHER, PRECISION	38
-	1	1	1	1752356-1 SUPPORT, TERMINAL	34
-	2	2	2	2079383-5 SCR, BHSC, RoHS (M4 X 20)	33
-	1	1	1	2161328-1 HEX HEAD, FLANGED, M5 X 8mm LONG	32
-	1	1	1	1-1320908-2 SPACER, STRIP GUIDE	30
-	1	1	1	2119959-1 ASSEMBLY, STRIP GUIDE	29
-	1	1	1	455888-3 SPACER, CRIMPER	28
-	1	1	1	1320928-2 STRIP GUIDE	24
-	1	1	1	2168083-2 SCR, SKT HD CAP, RoHS, M4 X 8.0	21
-	2	2	2	1-18028-2 WASHER, FLAT, REG M4	20
-	1	1	1	2119533-1 STRIPPER, SIDE FEED	19
-	1	1	1	2119806-1 INSERT, SHEAR	13
-	1	1	1	3-22280-3 SPRING, COMPRESSION	12
-	1	1	1	1-356885-4 STOP, SHEAR	11
-	1	1	1	2119805-1 SHEAR HOLDER, FRONT	10
-	1	1	1	1803095-1 FLOATING SHEAR, FRONT	9
-	1	1	1	7-1633131-4 ANVIL, COMBINATION .080	8
-	1	1	1	240641-5 SPACER	7
-	-	-	-	-	6
-	1	1	1	2119781-1 DEPRESSOR, SHEAR	5
-	1	1	1	238011-2 BLOCK, CRIMPER SPACER	4
-	1	1	1	4-1633965-2 CRIMPER, INSULATION O PREMIUM	3
-	1	1	1	455888-6 SPACER, CRIMPER	2
-	1	1	1	5-456405-3 CRIMPER, WIRE PREMIUM	1

DIMENSIONS:		TOLERANCES UNLESS OTHERWISE SPECIFIED:		OWN	DATE	NAME
mm	0 PLC ±	1 PLC ±	2 PLC ±	HOFFNER	2MAR2015	TE Connectivity
	3 PLC ±	4 PLC ±	ANGLES ±	CHS	3MAR2015	Harrisburg, PA 17105-3608
	FINISH			T. ELBIN		
MATERIAL				APVD	3MAR2015	
				PRODUCT SPEC		
				APPLICATION SPEC		
				WEIGHT		
				Customer Accessible Production Drawing	SCALE 1:2	SHEET 3 OF 4

LOC	DIST	REV	DATE	BY	APPV
A	66				
		DESCRIPTION	DATE	BY	APPV
		SEE SHEET 1			

FEED TYPE MECHANICAL



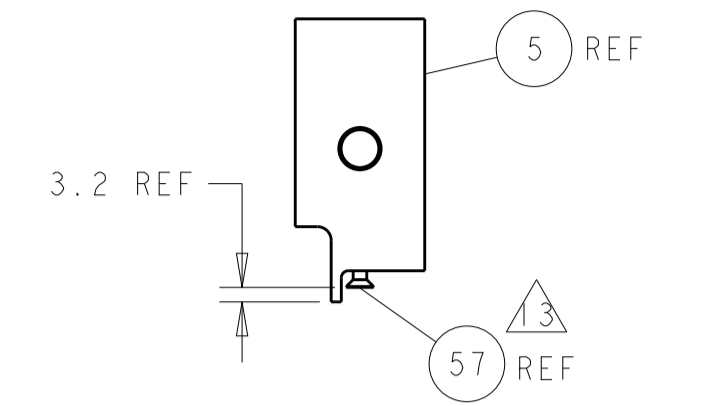
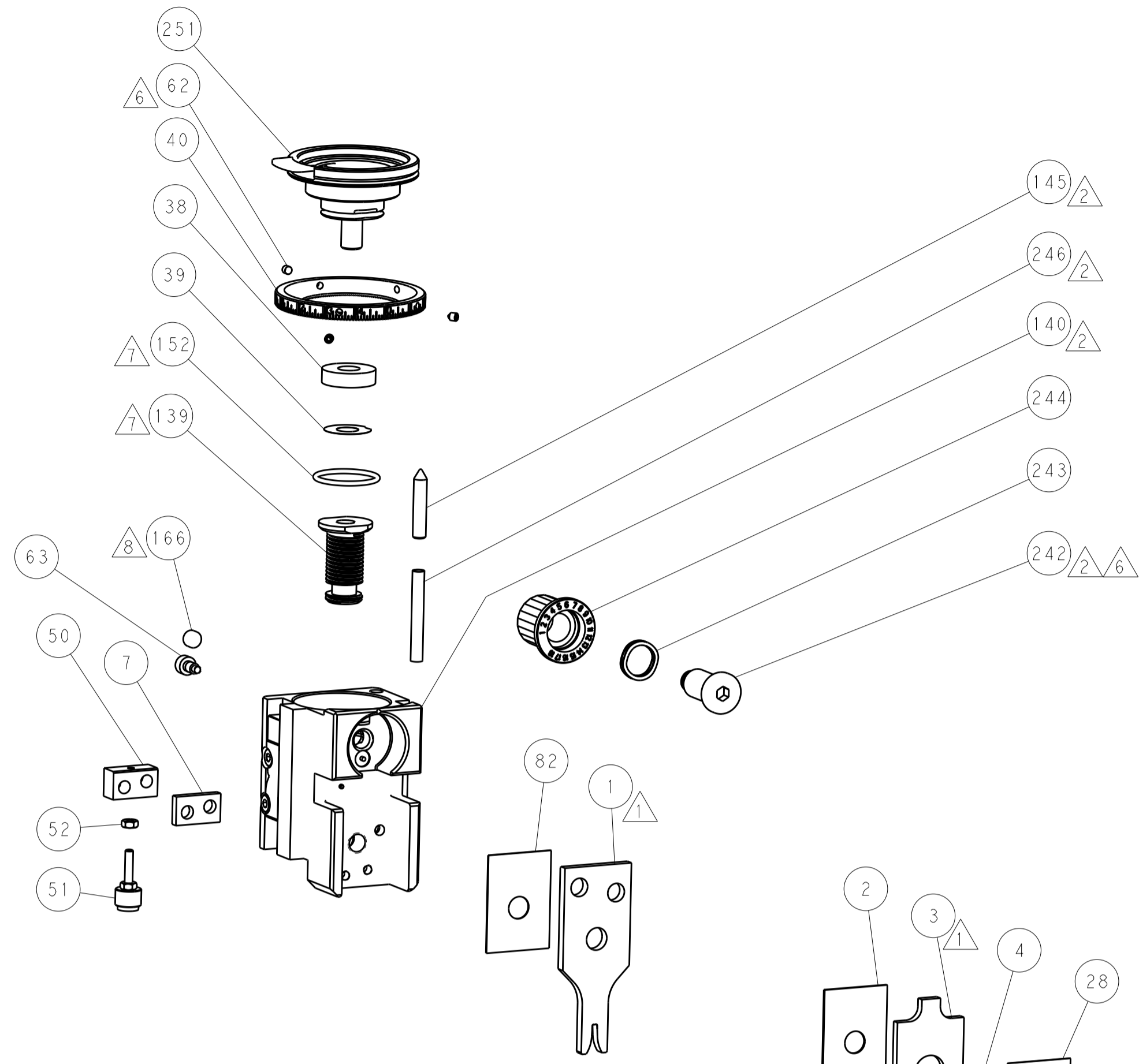
PNEUMATIC



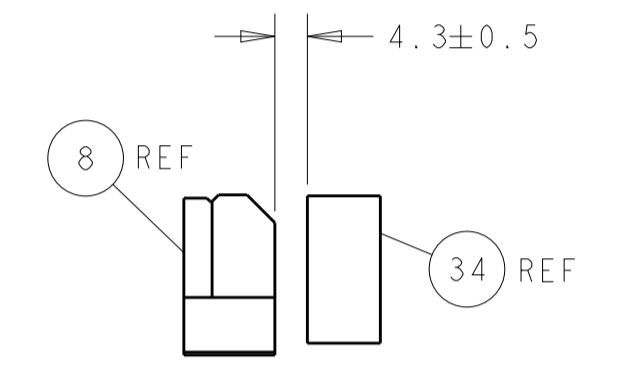
SERVO LATCH PLATE



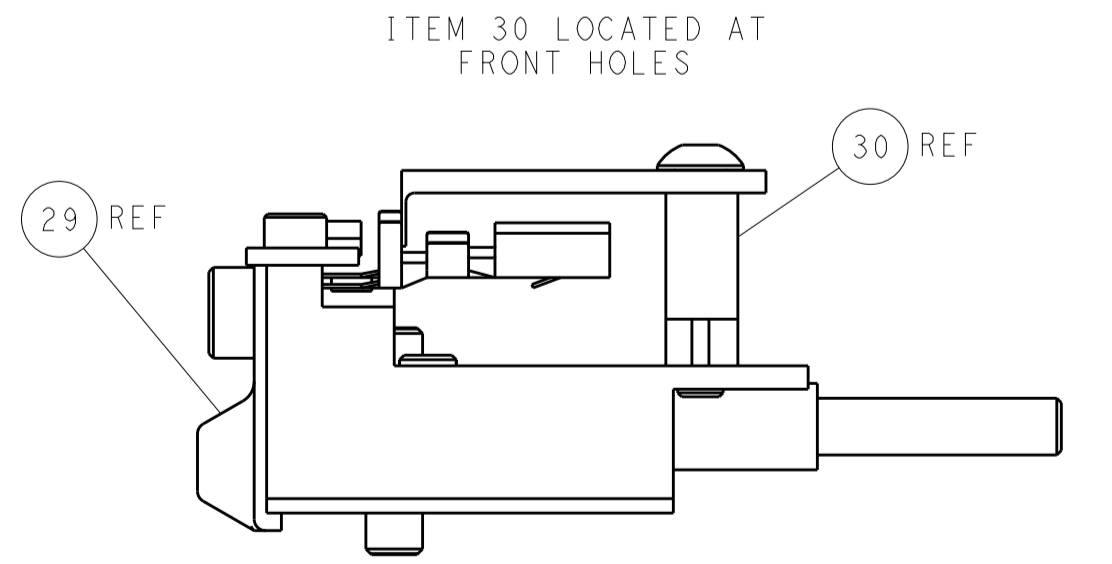
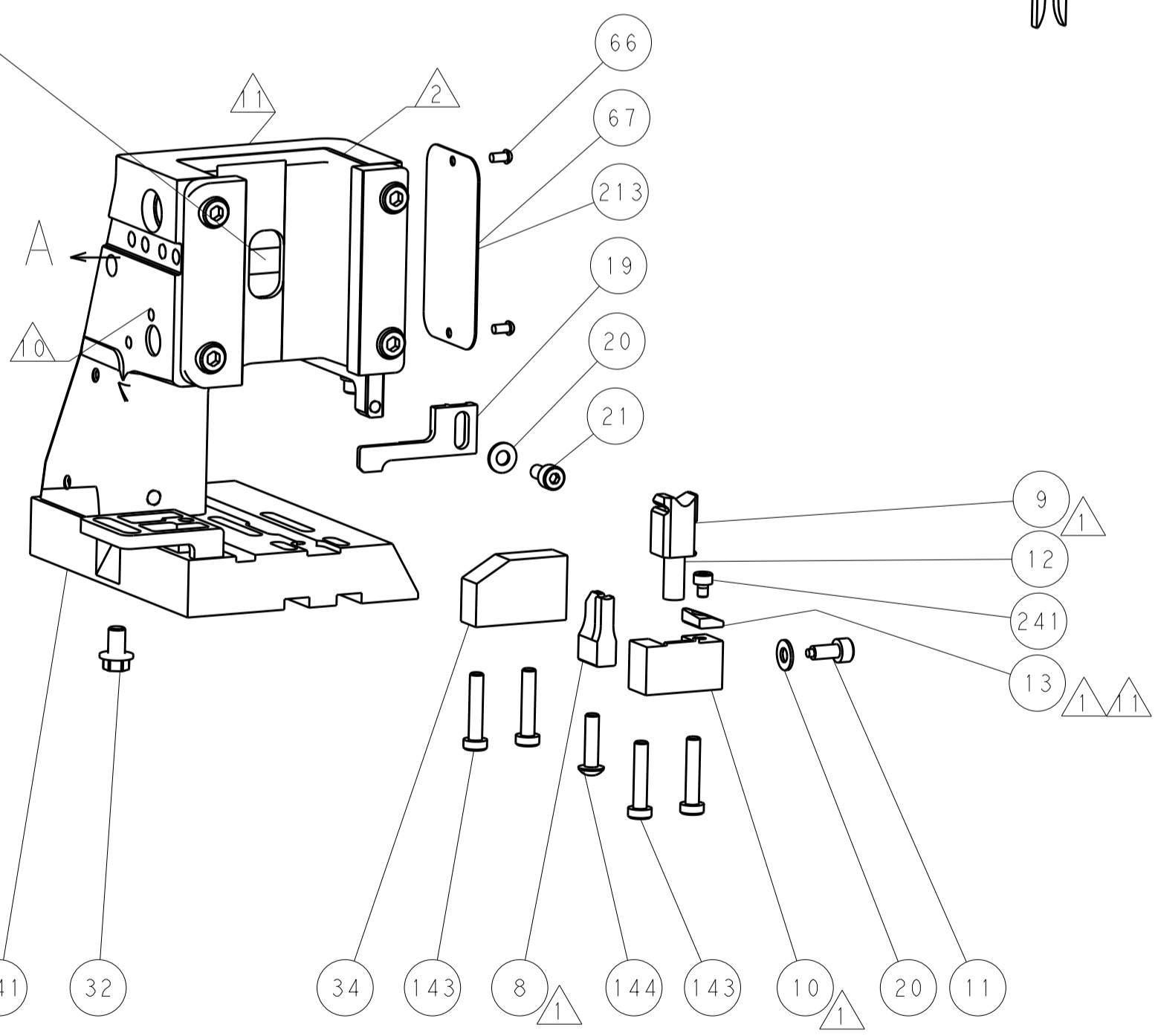
CAM POSITIONS



SHEAR DEPRESSOR DETAIL



TERMINAL SUPPORT LOCATION



FEED TRACK POSITION GUIDE BY INSULATION BARREL

PACIFIC VERSION
 Shown on sheets 3 of 4 & 4 of 4
 (Atlantic version shown on sheets 1 of 4 & 2 of 4)

<small>THIS DRAWING IS UNPUBLISHED. RELEASED FOR PUBLICATION. IT IS THE PROPERTY OF TYCO ELECTRONICS CORPORATION. IT IS TO BE USED ONLY FOR THE PURPOSES AND IN THE MANNER SPECIFIED BY TYCO ELECTRONICS CORPORATION. IT IS TO BE RETURNED TO TYCO ELECTRONICS CORPORATION WHEN NO LONGER REQUIRED.</small>		DWN: HOFFNER CHK: T. ELBIN APVD: T. ELBIN	2MAR2015 3MAR2015 3MAR2015	TE Connectivity Harrisburg, PA 17105-3608
DIMENSIONS: mm 		TOLERANCES UNLESS OTHERWISE SPECIFIED: 0 PLC ± 1 PLC ± 2 PLC ± 3 PLC ± 4 PLC ± ANGLES ±	NAME: Ocean Side Feed Applicator SIZE: A1 CAGE CODE: 00779 DRAWING NO: C-2266700	RESTRICTED TO:
MATERIAL:		FINISH:	WEIGHT:	SCALE: 1:2 SHEET: 4 OF 4 REV: C